

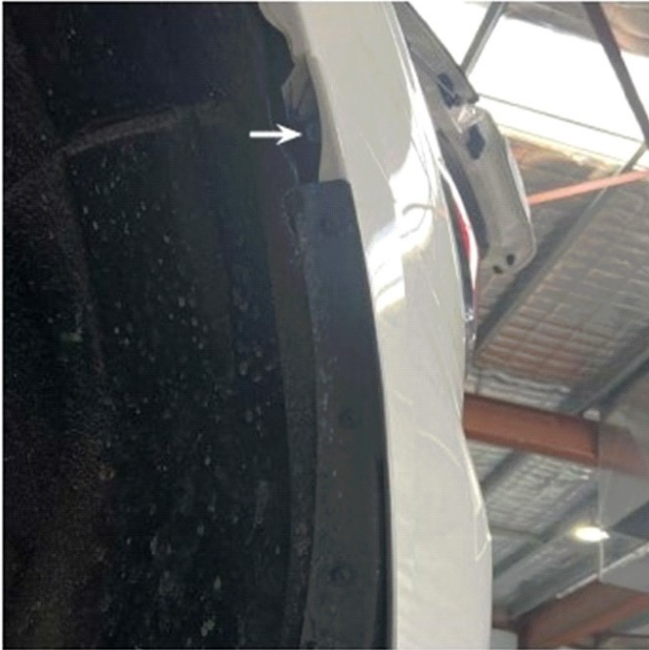
Y62 PATROL REAR BAR WITH TYRE CARRIER

INSTALLATION INSTRUCTIONS

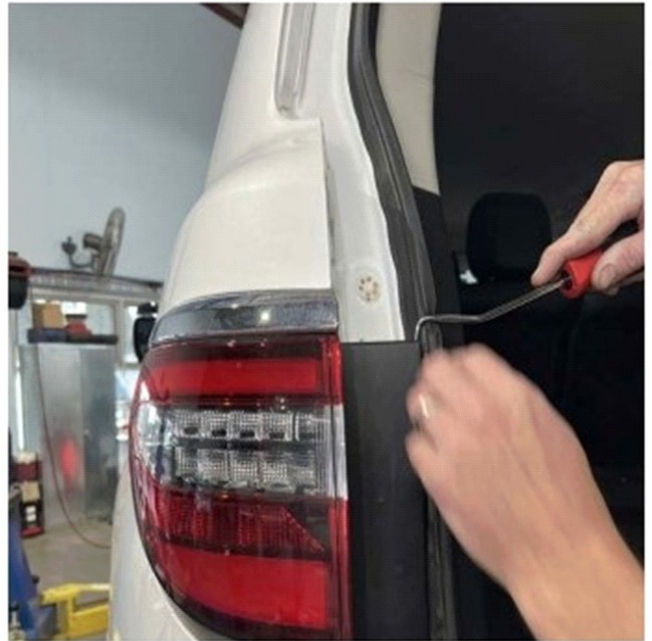
REAR SENSOR FITMENT



Remove bolt above mud flap behind inner guard



Take cover off side of taillight and remove the bolts behind it that hold the taillight on.



To remove the taillight you will need to push the rear of the light outwards to pop the clip on the side of the taillight



Remove the clip on top of the bumper and then pull the sides of the bumper out slightly and pull the bar firmly backwards to unclip the bumper.



Y62 PATROL REAR BAR WITH TYRE CARRIER

INSTALLATION INSTRUCTIONS

REAR SENSOR FITMENT



Cut Out for Rear Bar



Y62 PATROL REAR BAR WITH TYRE CARRIER

INSTALLATION INSTRUCTIONS

REAR SENSOR FITMENT

