

DASH
OFFROAD

JIMNY
SLIDERS



INSTALLATION
INSTRUCTIONS

JIMNY SLIDERS

INSTALLATION INSTRUCTIONS



10 X M10X30MM BOLTS



2 X M10X40MM BOLTS



2 X M10X110MM BOLTS



4 X M10 FLANGE NUTS



10 X M10 FLANGE NUTS ON WIRE



2 X PLATE/WASHERS



2 X M10 - 50mm PLATE



4 X M10 WASHERS

JIMNY SLIDERS

INSTALLATION INSTRUCTIONS



1. Bolt the front slider loosely with the M10x40mm bolts, flange nut and large plate washer



2. Drill out the 2 outer holes on the rear mount to 22mm to allow access for the flange nuts on wire



JIMNY SLIDERS

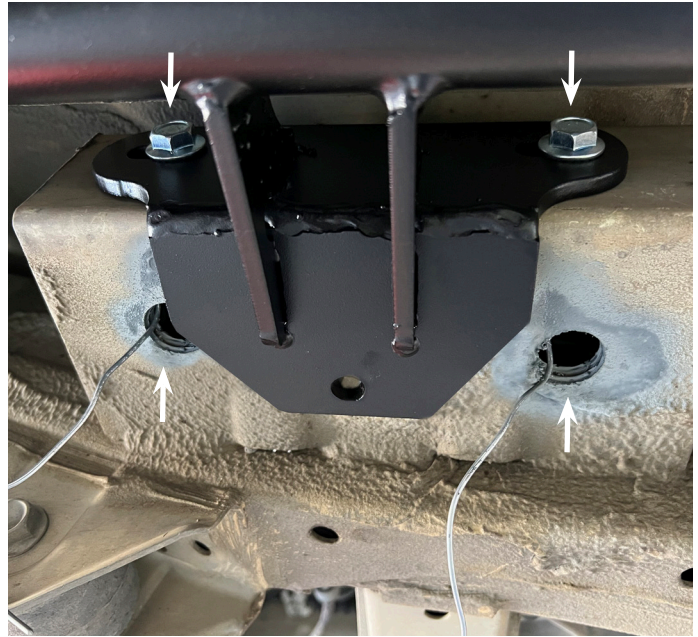
INSTALLATION INSTRUCTIONS



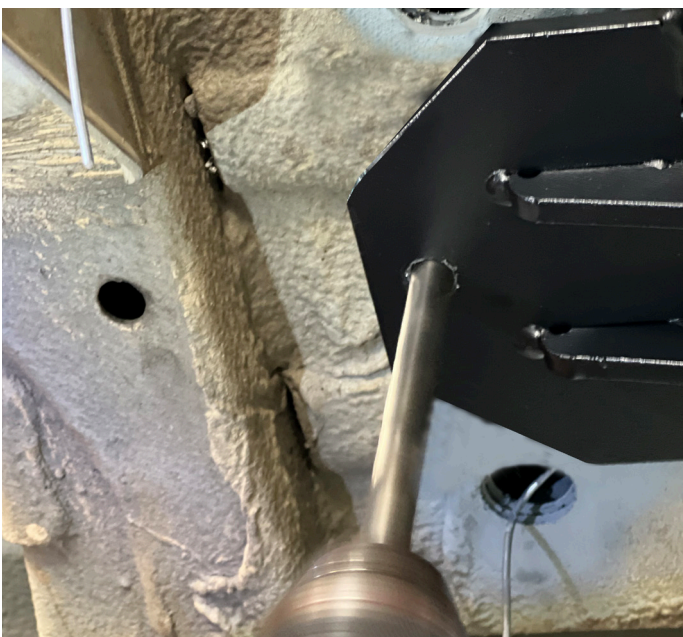
3. Paint holes to seal raw metal



4. Mount the rear bracket with the M10x30mm bolts and flange nuts on wires



5. Drill the centre hole on the rear mount through the bottom and top of the box section and bolt with M10x110mm, flange nut and 50mm washer on top.



JIMNY SLIDERS

INSTALLATION INSTRUCTIONS



6. Tighten the front bolt and then drill through the plate and chassis. Feed the Flange nut on wire in through the front body mount and fit with the M10x30mm bolt in the hole just drilled

