

**DASH**  
OFFROAD

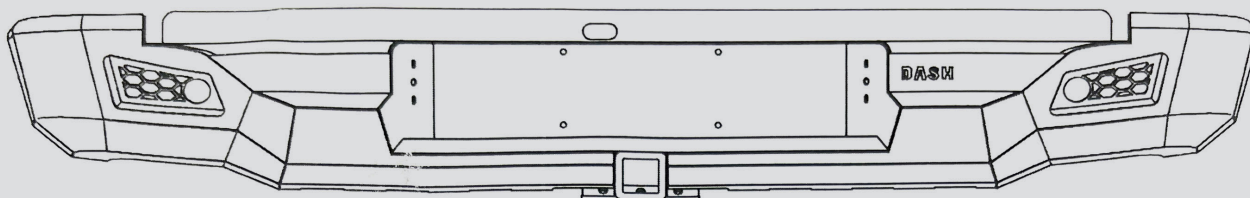
**NAVARA**  
**REAR BAR**



**INSTALLATION**  
**INSTRUCTIONS**

# NAVARA REAR BAR

## INSTALLATION INSTRUCTIONS



 **4 X M4 FLANGE NUTS**

 **2 X M6 NUTS**

 **8 X M12 FLANGE NUTS**

 **4 X M6 WASHERS (STAIN)**

 **8 X M6 WASHERS**

 **10 X M10 WASHERS**

 **14 X M12 WASHERS**

 **4 X M4X20MM HEX BOLTS**

 **2 X M6X40MM BOLTS**

 **10 X M10X30MM BOLTS**

 **8 X M12X30MM BOLTS**

 **10 X M12X40MM BOLTS**



# NAVARA REAR BAR

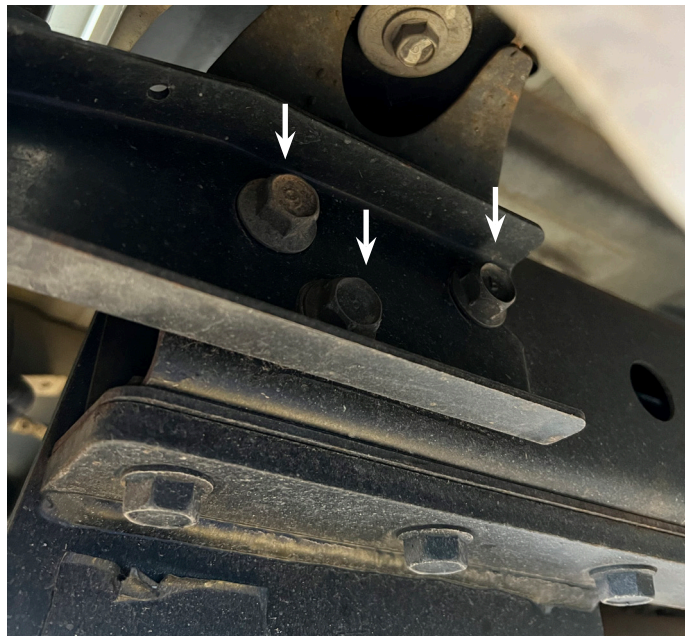
## INSTALLATION INSTRUCTIONS



1. Unplug number plate light loom



2. Unbolt and remove factory bumper - 3 bolts each side



3. Unbolt and remove existing tow bar if fitted - 6 bolts each side





# NAVARA REAR BAR

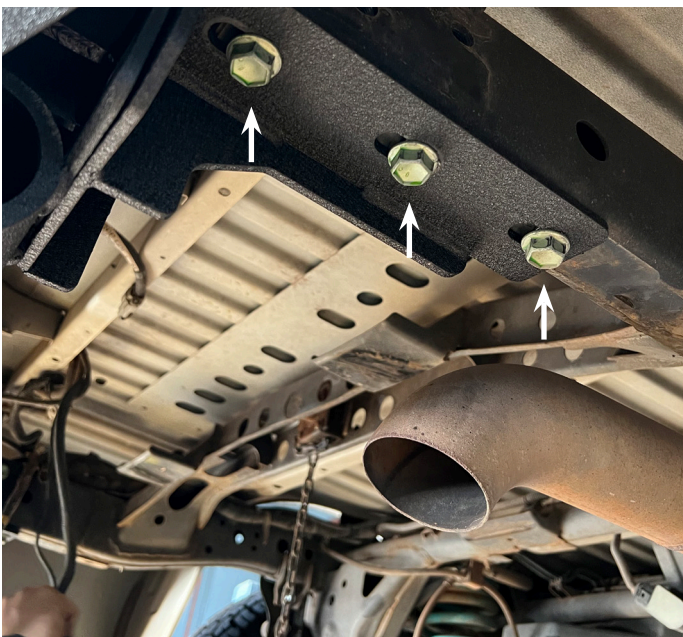
## INSTALLATION INSTRUCTIONS



4. Fit the brackets to the bar. Use the twin plated bolts on the inside and the single plated bolt on the outside. Fit the M12 Flange nuts and leave finger tight for now.



5. Fit the bar to the chassis with the existing tow bar bolts or M12x40mm bolts supplied. 3 bolts to the base of the chassis and 2 bolts to the inside, leave finger tight for now.





# NAVARA REAR BAR

## INSTALLATION INSTRUCTIONS



7. Fit M12x30mm bolt with washer and flange nut to the lower outside corner of the bracket/bar. Now adjust the position of the bar left to right and up and down until aligned and tighten all bolts.



8. Fit the numberplate lights with M4 Hex bolts and nuts.



9. Remove the numberplate light loom/plug from the old bumper and wire to the new lights and connect plug back onto the ute loom.

