

DASH
OFFROAD

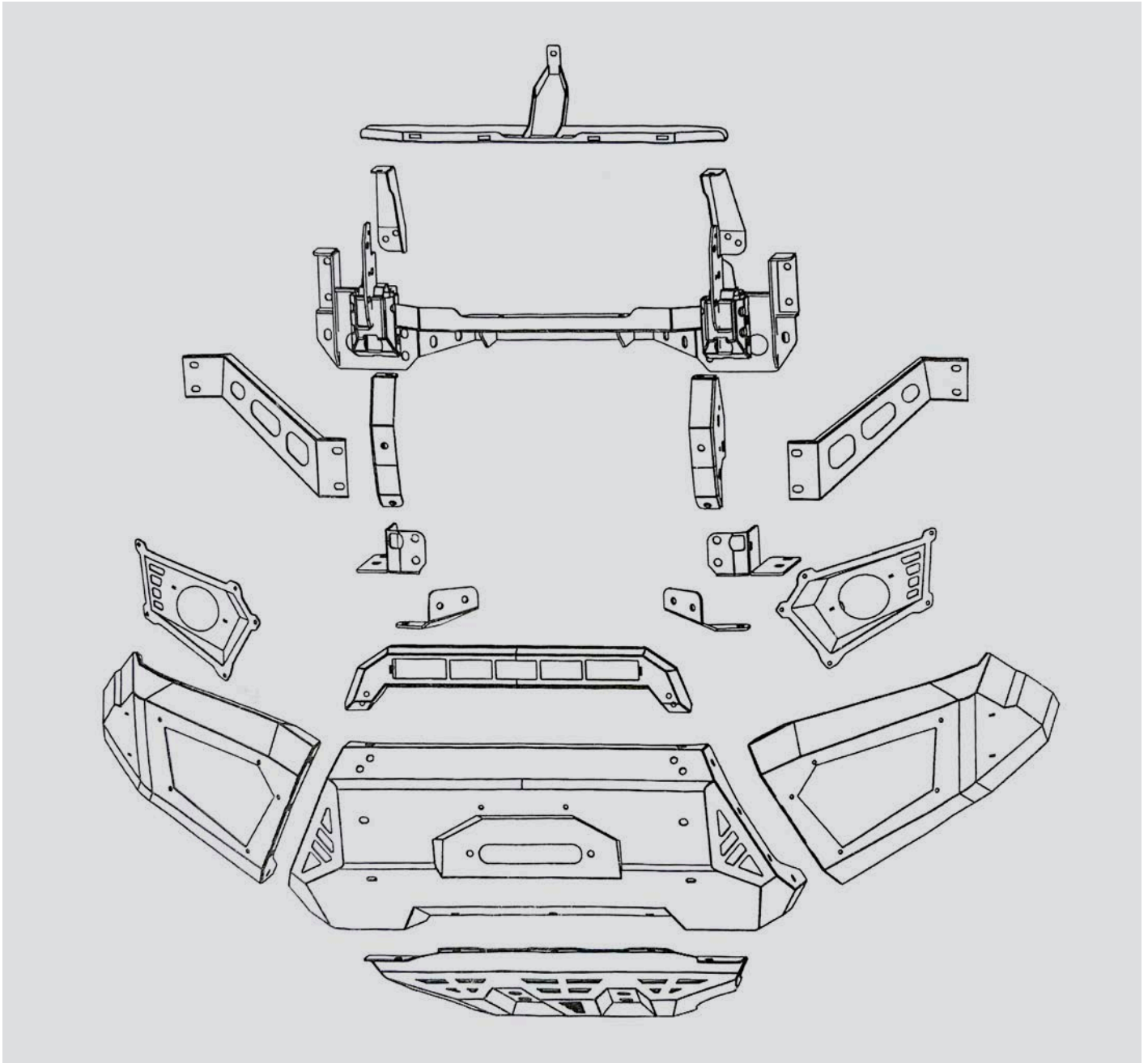
NAVARA
SERIES 1-4
BULLBAR



INSTALLATION
INSTRUCTIONS

NAVARA SERIES 1-4 BULLBAR

INSTALLATION INSTRUCTIONS



4 X M8 FLANGE NUTS



8 X M8 WASHERS (BLACK)



16 X M6X15MM BUTTON HEAD BOLTS (BLACK)



10 X M10 FLANGE NUTS



10 X M10 WASHERS (BLACK)



6 X M8X20MM BOLTS



16 X M12 FLANGE NUTS



20 X M12 WASHERS (BLACK)



10 X M10X25MM BUTTON HEAD BOLTS (BLACK)



12 X M6 CAGE NUTS



4 X M12 MOULD CLAMP



24 X M10X20MM FLANGE BOLTS



9 X M10 CAGE NUTS



2 X M8 SPACER WASHER (10MM THICK)



20 X M12X30MM BOLTS



4 X M12 CAGE NUTS

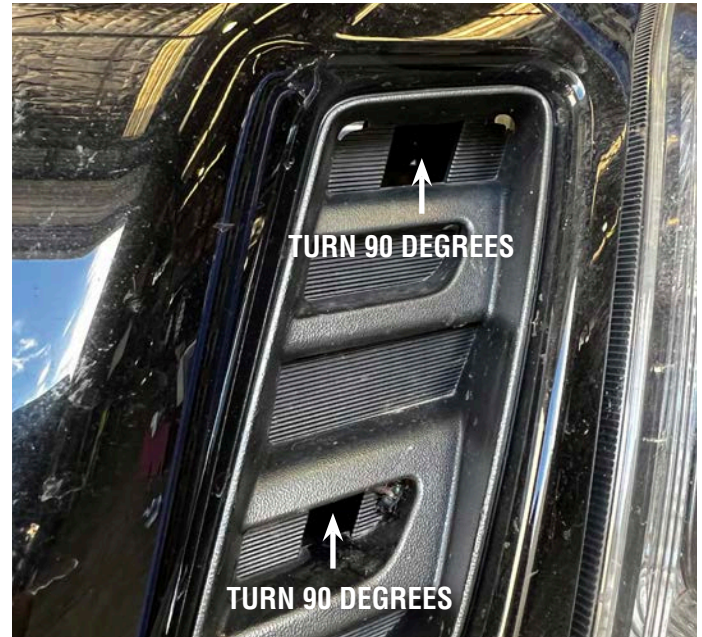
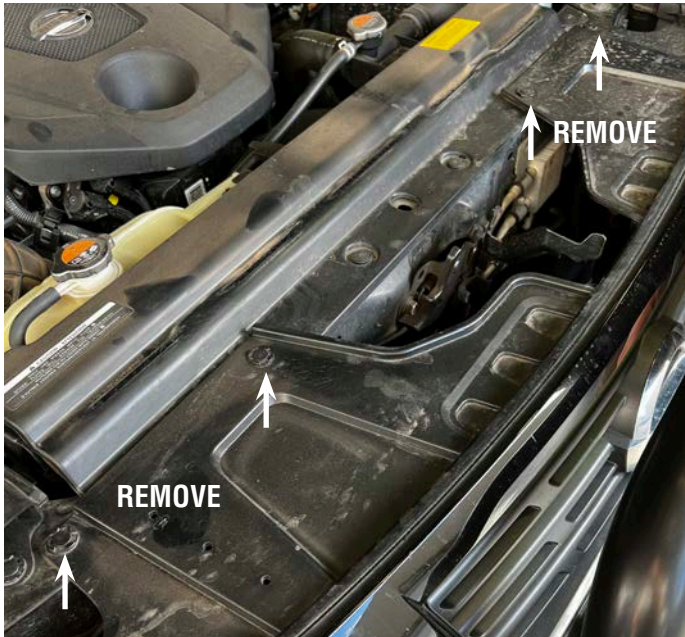


2 X M8 NUTSERT

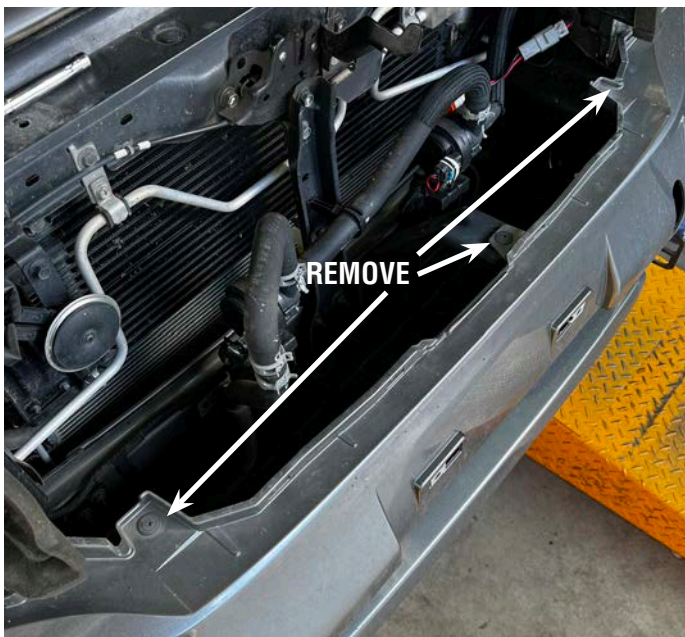
NAVARA SERIES 1-4 BULLBAR INSTALLATION INSTRUCTIONS



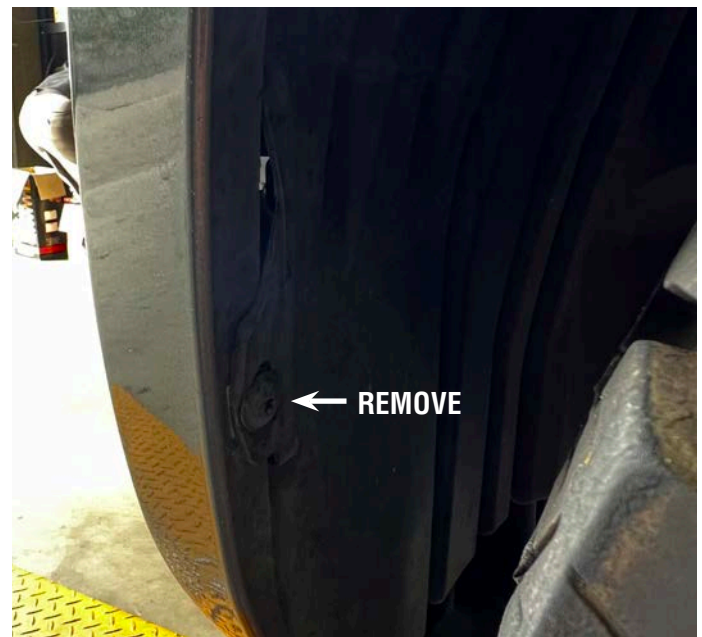
1. Remove plastic radiator panel and grille. To release the grille there are two holes near the headlights that require a screwdriver to turn the clips 90 degrees to release them



2. To remove the bumper remove the 3 plastic clip along the top



3. Remove the screw on the inner guard



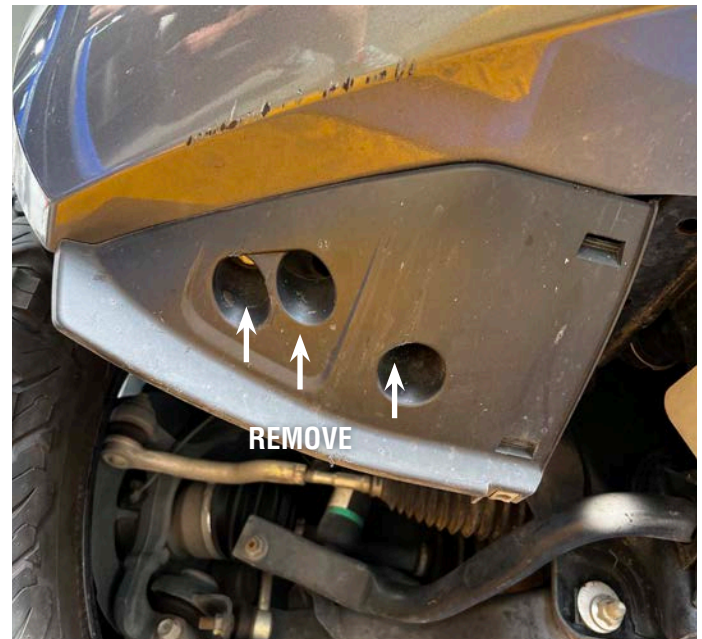
NAVARA SERIES 1-4 BULLBAR INSTALLATION INSTRUCTIONS



3. Flex the inner guard out and remove the bolt that attached the bumper to the front of the guard



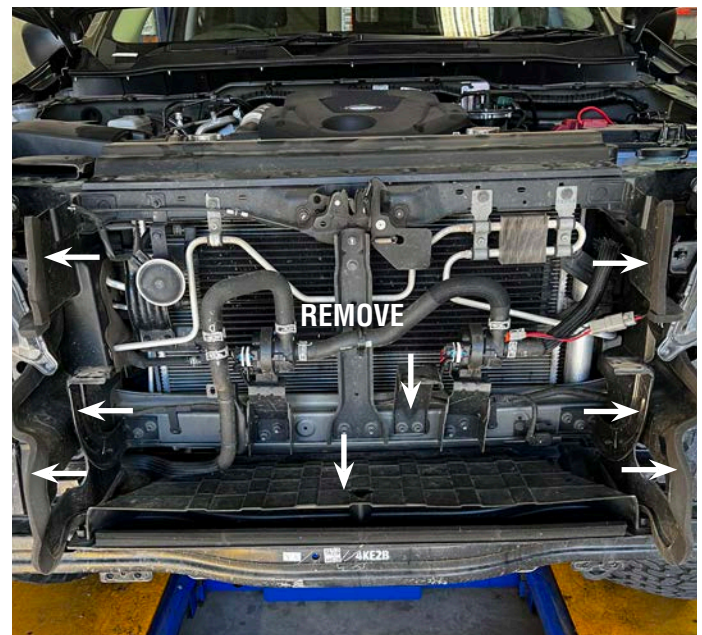
4. Remove 5 bolts and under the bumper and retain. Remove the factory bashplate and retain bolts. Unplug the fog lights. You can now remove the bumper, it will need a firm pull from the outside edges to pop off.



5. Remove the headlight and bumper stays



6. Remove 3 grille brackets, plastic wind deflectors and lower air scoop



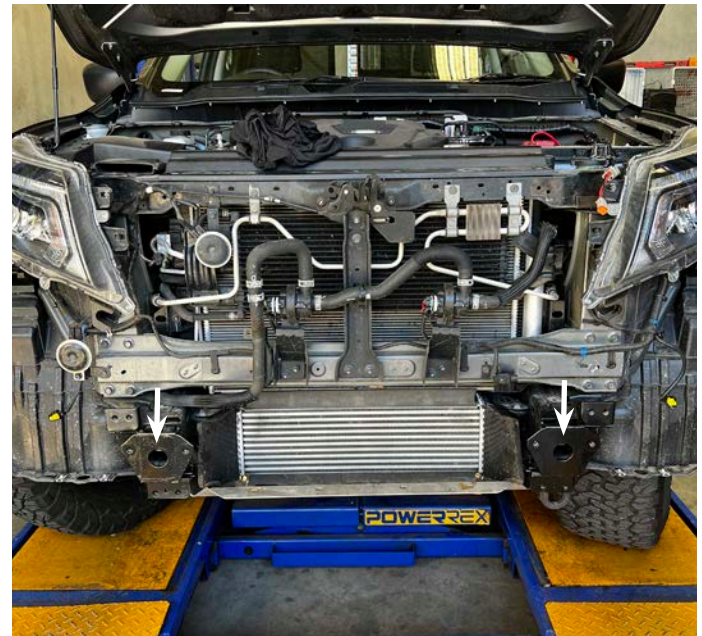
NAVARA SERIES 1-4 BULLBAR INSTALLATION INSTRUCTIONS



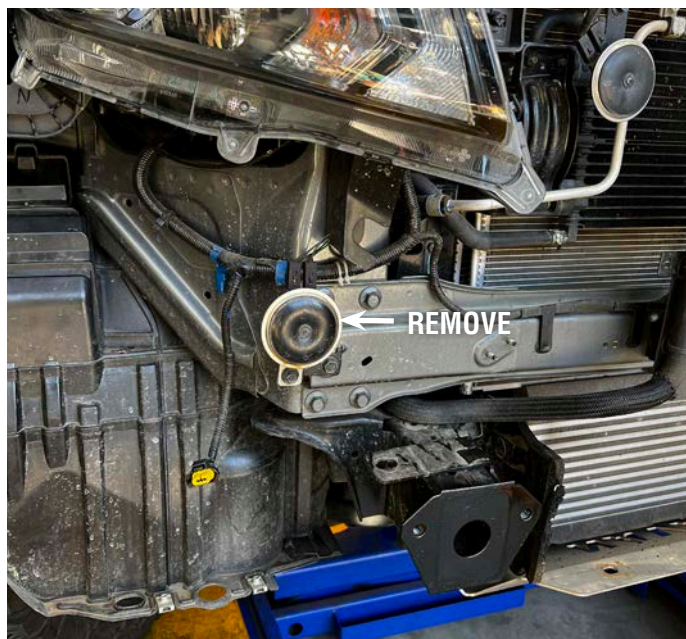
7. Remove the bumper support bracket and retain bolts. Also remove any factory or after market recovery points



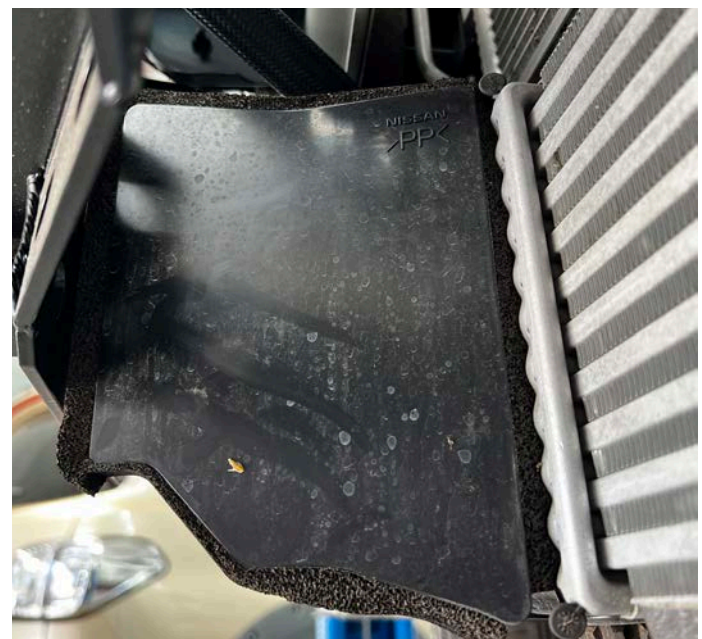
8. Sand back and paint the chassis mounts if required.



9. Remove the horn below the drivers headlight, this will be relocated later.



10. Remove intercooler deflectors



NAVARA SERIES 1-4 BULLBAR INSTALLATION INSTRUCTIONS



11. Mask and paint under the headlight black (this helps to create a visual shadow line)



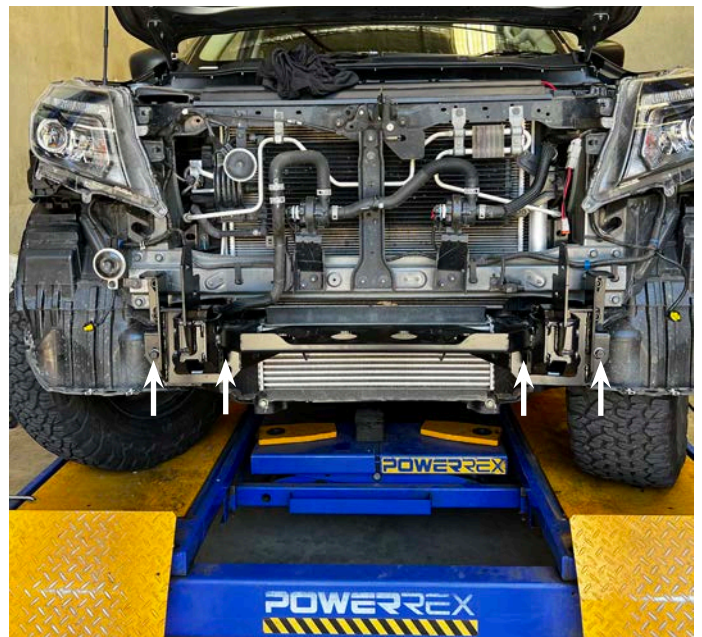
12. Remove factory or after market recovery points and retain.



13. Bolt the support brackets to the base of the winch cradle with M12x30mm bolts and Flange nuts



14. Attach the winch cradle with the 4 Factory bolts to the front of the chassis



NAVARA SERIES 1-4 BULLBAR

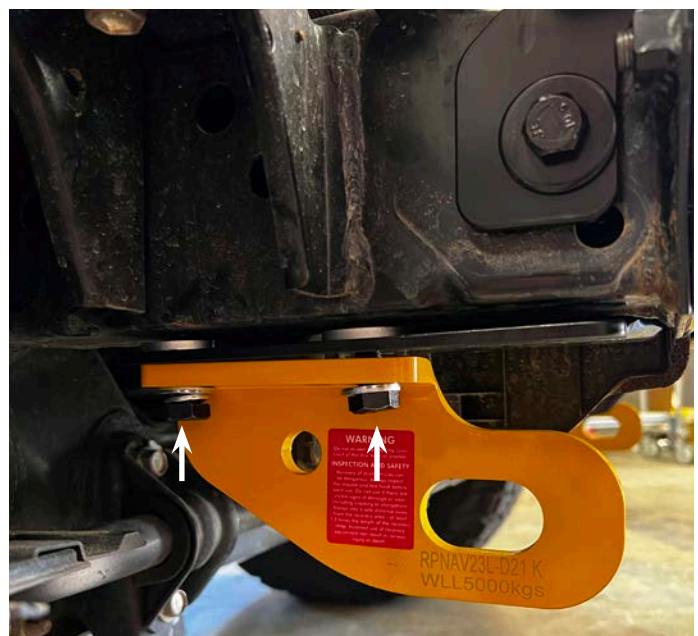
INSTALLATION INSTRUCTIONS



15. Bolt the rear of the winch cradle to the chassis with M12x30mm Bolt and flange nut placed inside the chassis.



16. Fit the chassis support brackets to the chassis where the recovery points are mounted. Use the bolts in the recovery brackets bag. (See Below) If recovery points are being fitted, attach these now.

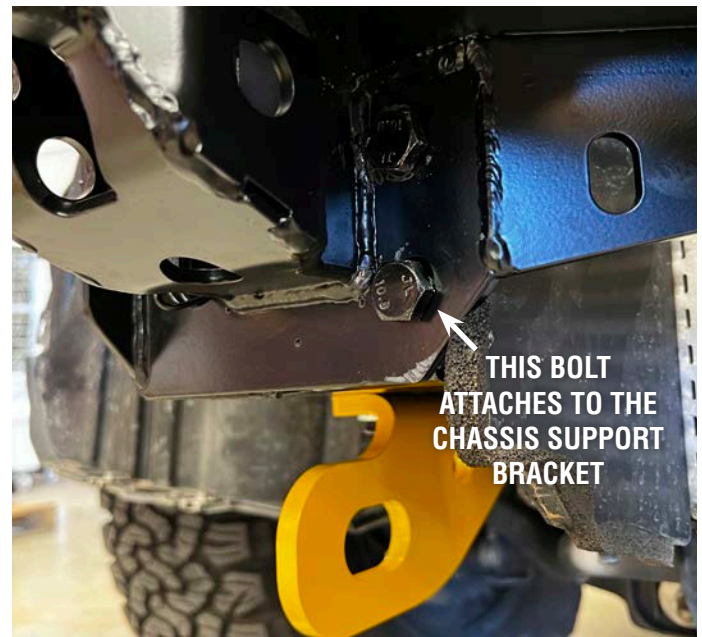
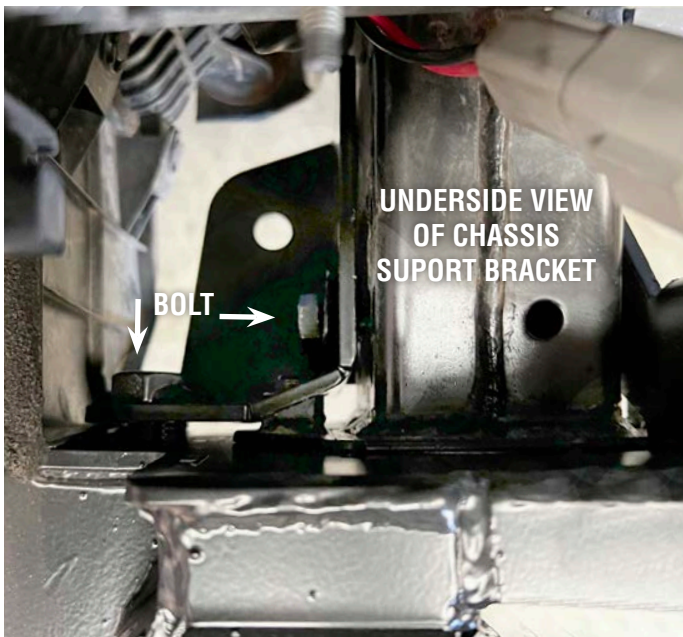


NAVARA SERIES 1-4 BULLBAR

INSTALLATION INSTRUCTIONS



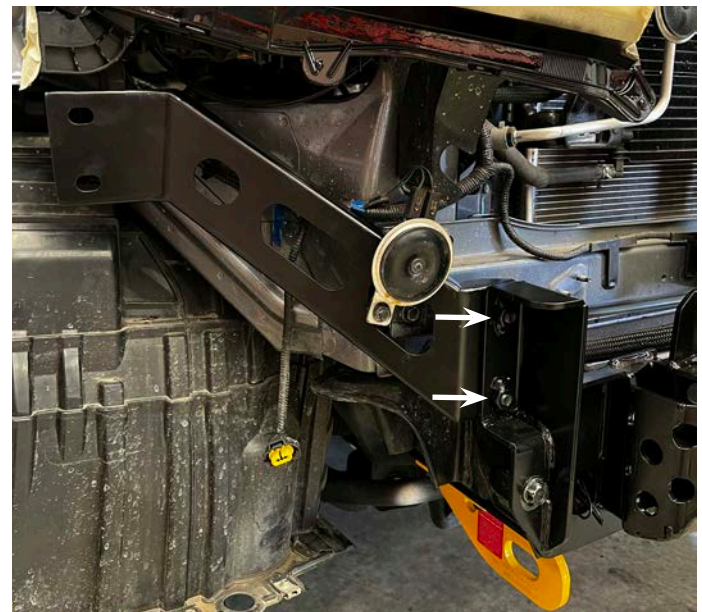
17. Bolt the inside of the chassis support bracket with M12x30mm Bolts and flange nuts. One bolt goes through the chassis, the other bolts to the front of the winch cradle.



19. Fit the bumper brackets with M12x30mm Bolts and flange nuts. Make sure the bracket is pulled as far forward as possible and the nuts are on the outside making it easier to loosen if adjustment is need later.



20. Fit the wing support brackets with M10x20mm Bolts with flange nuts. Refit the horn which may require adjusting when the fog lights are fitted.



NAVARA SERIES 1-4 BULLBAR INSTALLATION INSTRUCTIONS



21. Assemble and fit the grille support panel with M8x20mm bolts and flange nuts.

NOTE: if you are fitting a lightbar inside the bar hoop don't fit this yet as there won't be enough room to fit the grille. You will need to fit the grille to the grille support as one assembly.



22. Bolt the bar wings to the centre of bar with M10x20mm bolts and flange nuts.



23. Bolt the lightbar hoop to the bar centre with M10x25mm Button head bolts and Flange nuts.

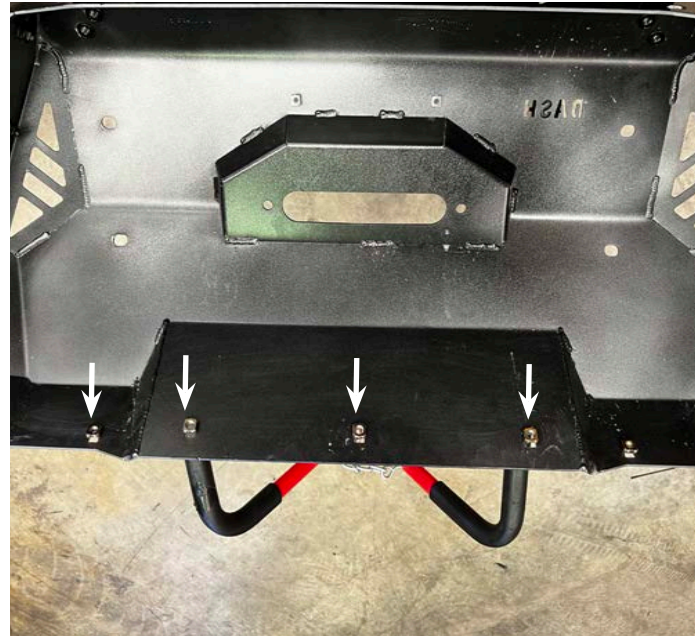
NOTE: The Road Vision 21inch lightbar fits the lightbar hoop.



NAVARA SERIES 1-4 BULLBAR INSTALLATION INSTRUCTIONS

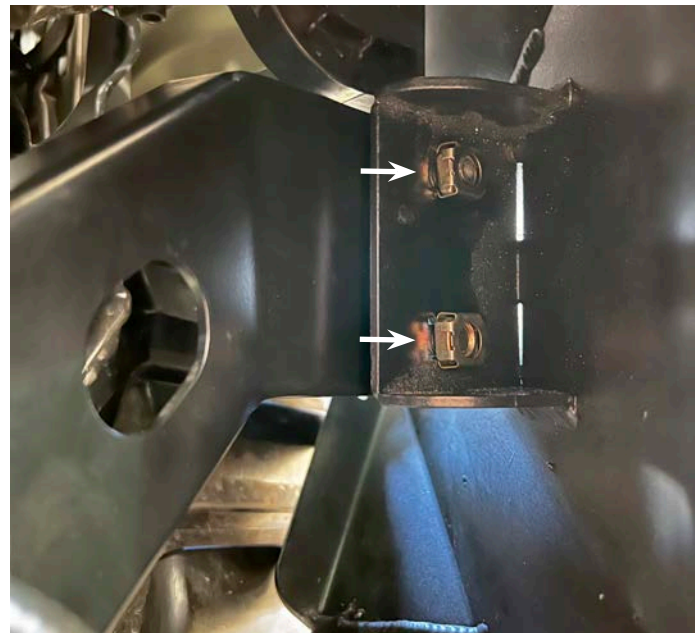
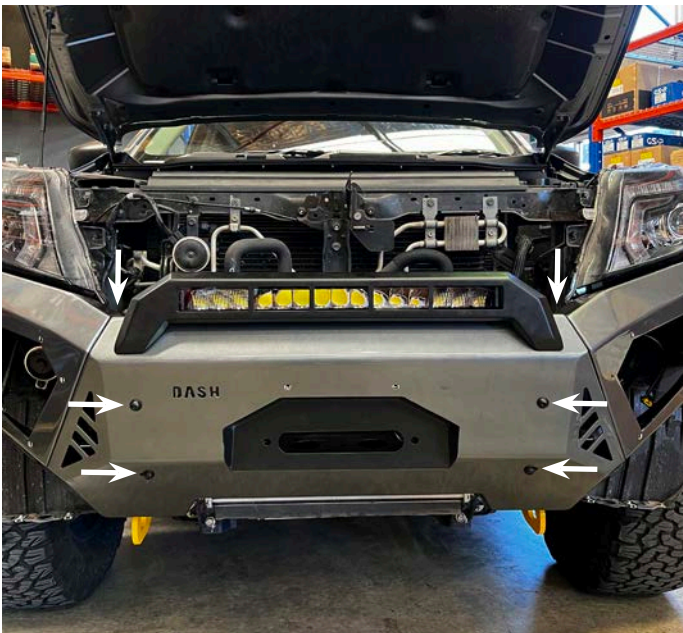


24. Insert the cage nuts into the wings and centre bar as per below.



25. Mount the bar with 6x M10 Button head bolts with washers, 4 bolts in the front and 2 in top.

26. Bolt the wings to the wing supports with M10x20mm Flange Bolts. You will need hold the wings down into position as you tighten the bolts to ensure a neat fit along the guards.



NAVARA SERIES 1-4 BULLBAR

INSTALLATION INSTRUCTIONS



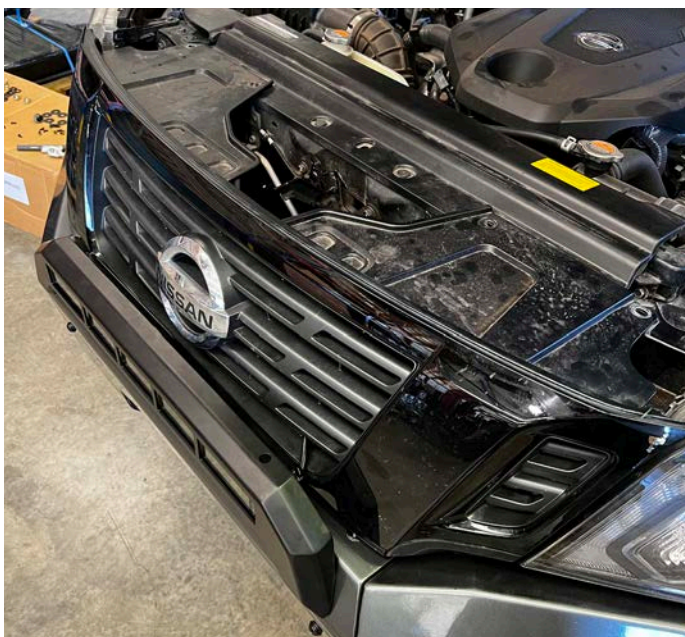
27. Fit the factory fog lights to the surrounds with the factory bolts



28. Fit the fog light surrounds with M6x15mm button head bolts.



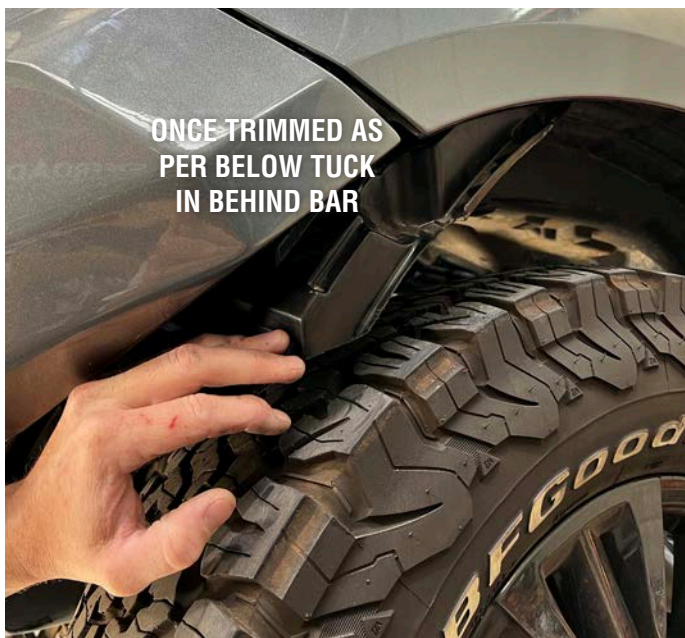
29. Refit the grille



NAVARA SERIES 1-4 BULLBAR INSTALLATION INSTRUCTIONS



30. Trim the plastic wheel flare as marked below and tuck behind the bar

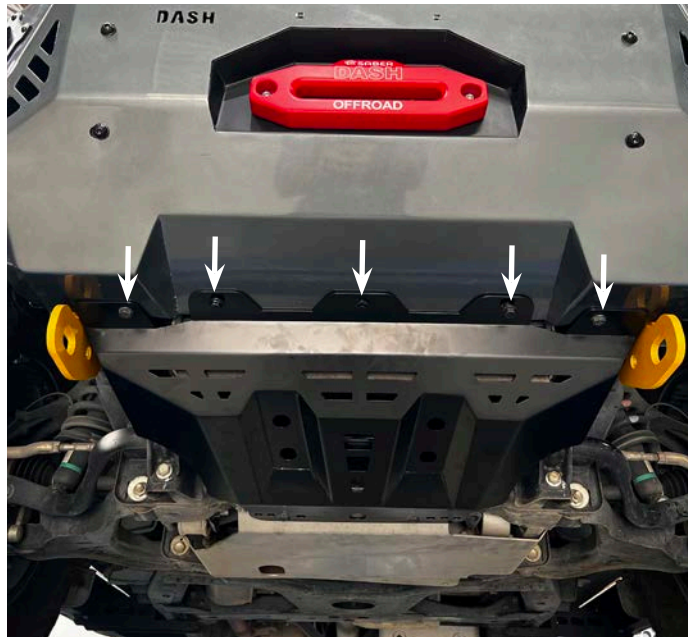


NAVARA SERIES 1-4 BULLBAR

INSTALLATION INSTRUCTIONS



31. Mount the front of the bashplate with 5x M10 Flange bolts to the cage nuts in the base of the bar



31. To bolt the rear of the bash plate you will need to drill out 2 holes in the cross member and insert 2 x M8 Nutserts. Bolt with 2x M8x20mm Bolts with the 10mm spacer washer into the cage nuts.

