

DASH
OFFROAD

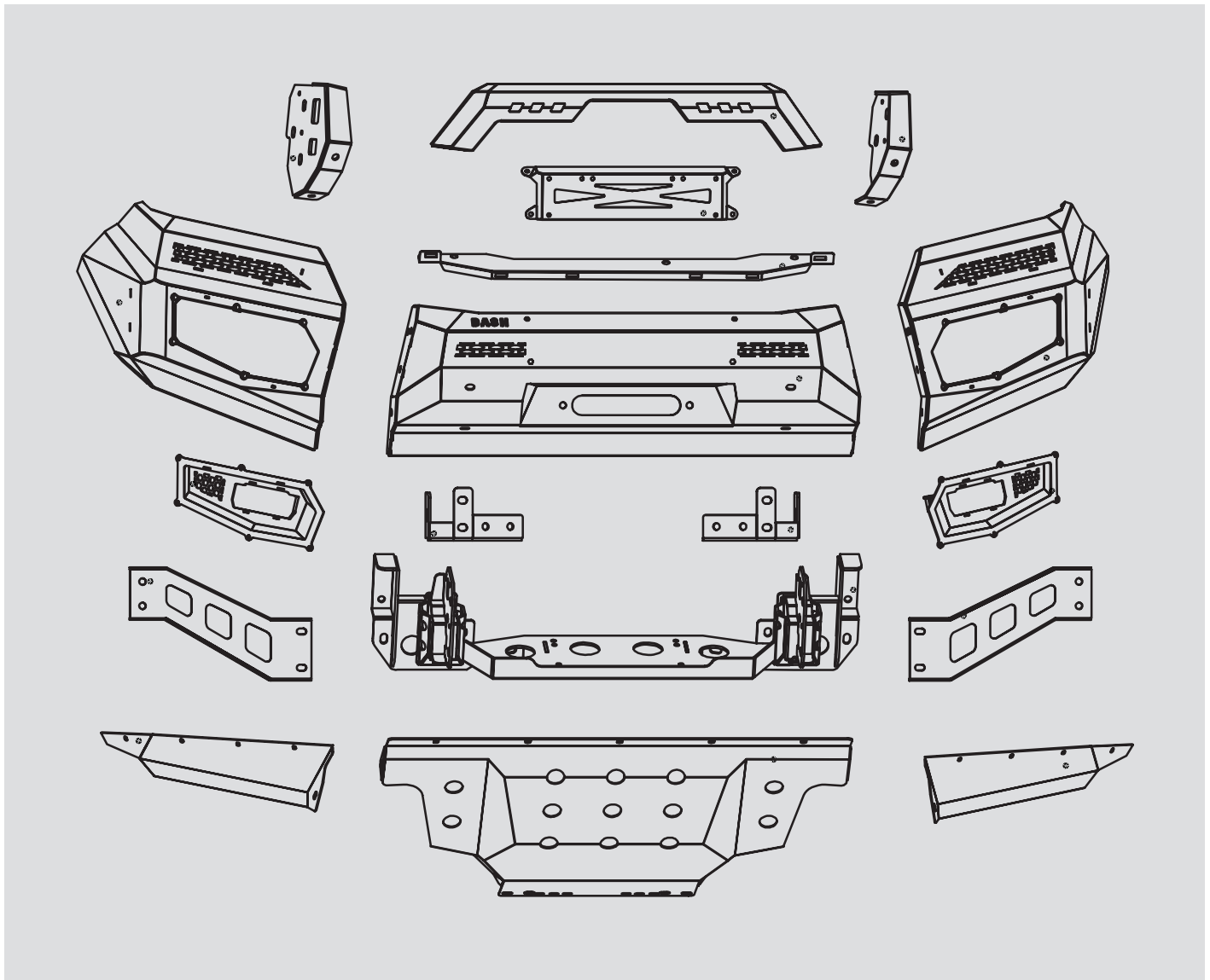
NAVARA
BULLBAR


















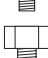








INSTALLATION
INSTRUCTIONS

NAVARA BULLBAR

INSTALLATION INSTRUCTIONS



	2 X M10 FLANGE NUTS		24 X M6X12MM WASHERS (BLACK)		28 X M6X20MM BUTTON HEAD BOLTS (BLACK)
	8 X M12 FLANGE NUTS		8 X M8X16MM WASHERS (BLACK)		5 X M8X20MM BUTTON HEAD BOLTS (BLACK)
	4 X M18 NYLON LOCK NUT		6 X M8X24MM WASHERS (BLACK)		8 X M10X30MM BUTTON HEAD BOLTS (BLACK)
	2 X M10 NYLON LOCK NUT		10 X M10X20MM WASHERS (BLACK)		4 X M8X30MM BOLTS
	18 X M12 NYLON LOCK NUT		10 X M10X30MM WASHERS (BLACK)		30 X M10X25MM BOLTS
	4 X M12 MOULD CLAMP		32 X M12X24MM WASHERS (BLACK)		8 X M12X25MM BOLTS
	12 X M6 CAGE NUTS		16 X M12X37MM WASHERS (BLACK)		22 X M12X35MM BOLTS
	12 X M6 NUTSERT				
	5 X M8 NUTSERT				
	14 X M10 WELDING MASTER				

NAVARA BULLBAR

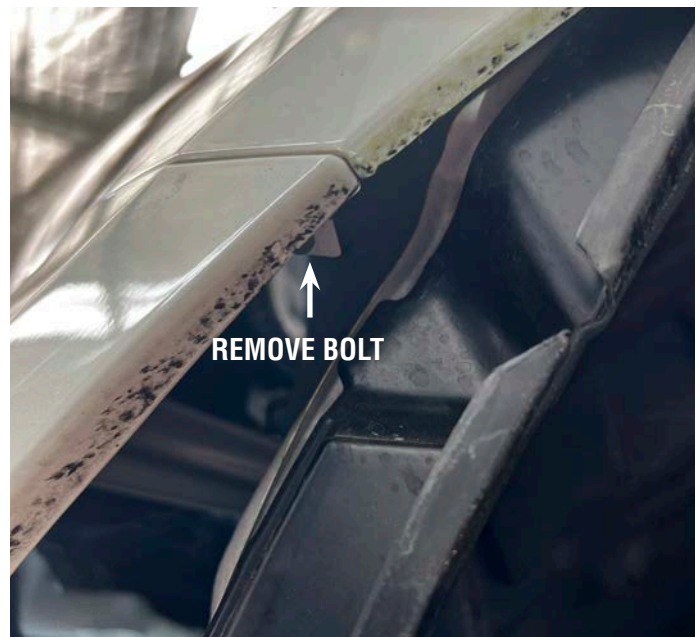
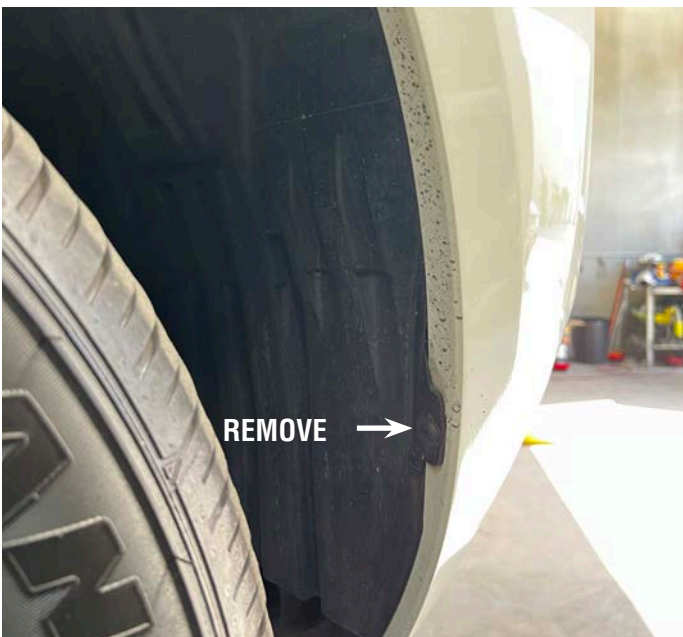
INSTALLATION INSTRUCTIONS



1. Remove plastic panel under bumper.



2. Remove the screw on the front of the inner guard. Once this is done carefully flex the inner guard to access and remove the bolt attaching the bumper to the outer guard

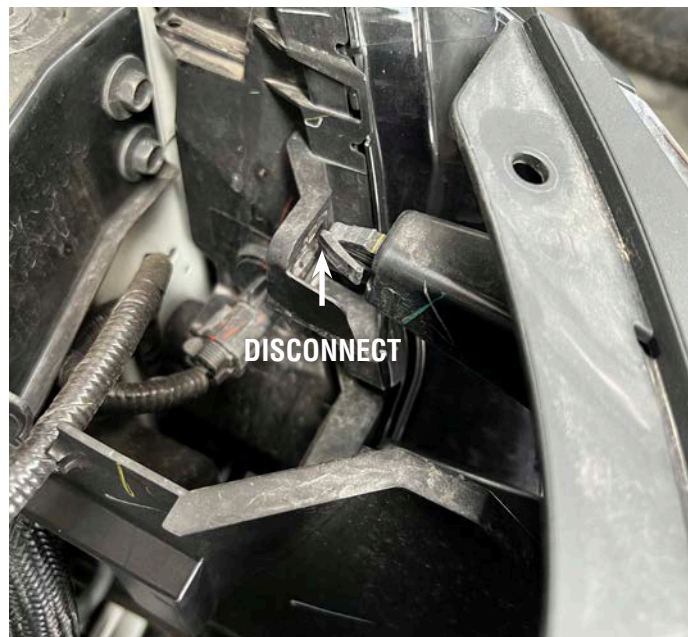


NAVARA BULLBAR

INSTALLATION INSTRUCTIONS



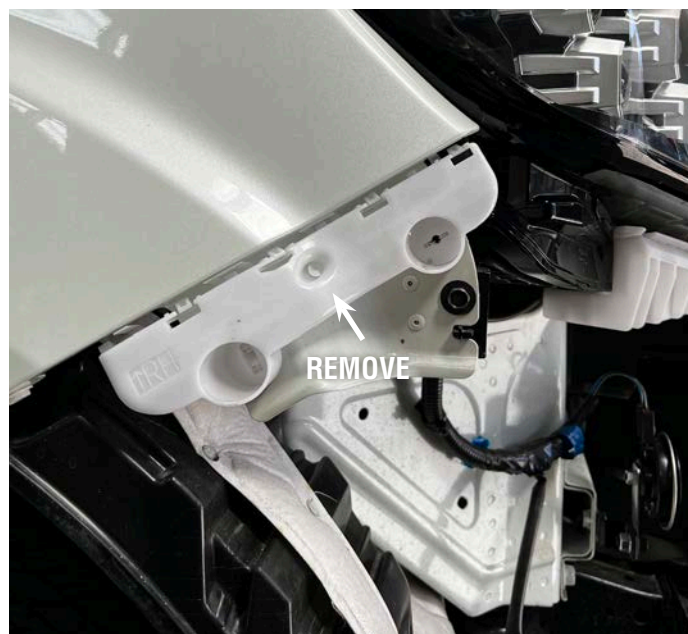
3. Remove the radiator cover panel and release the top 4 Grille clips, unplug the front camera and disconnect the fog lights. Once this is done the bumper can be removed, it will need a firm pull from the outside edges to pop off.



4. Remove bumper support panel.



5. Remove headlight bar stays



6. Remove bashplate and retain bolts



NAVARA BULLBAR

INSTALLATION INSTRUCTIONS



7. Remove lower air scoop



8. Remove headlight front bar stay.



9. Trim plastic on passenger side as indicated below



10. Remove intercooler deflector on drivers side

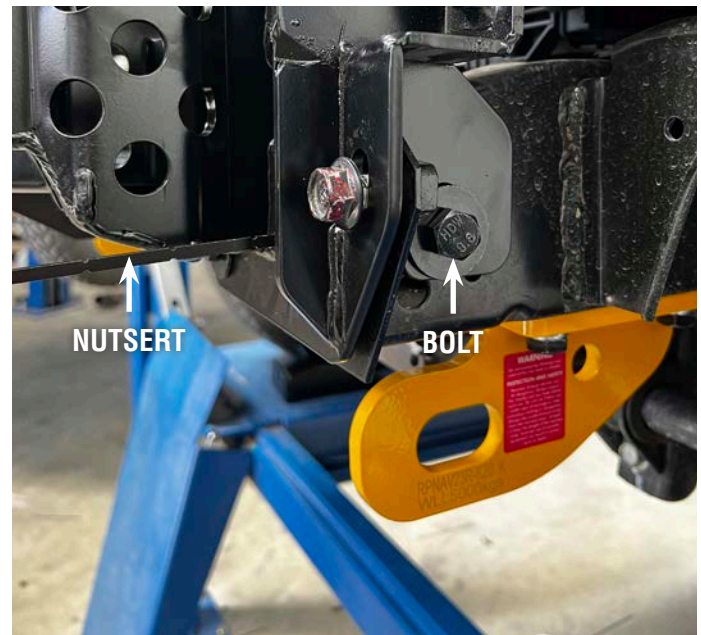
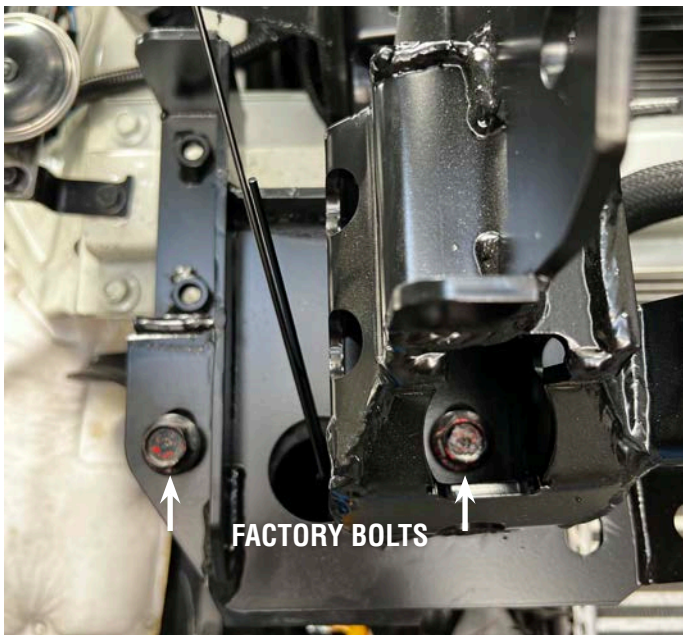


NAVARA BULLBAR

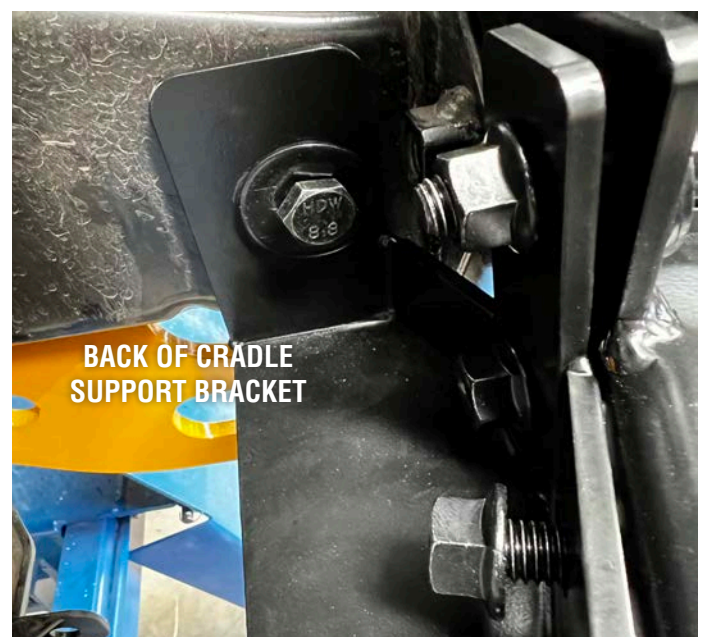
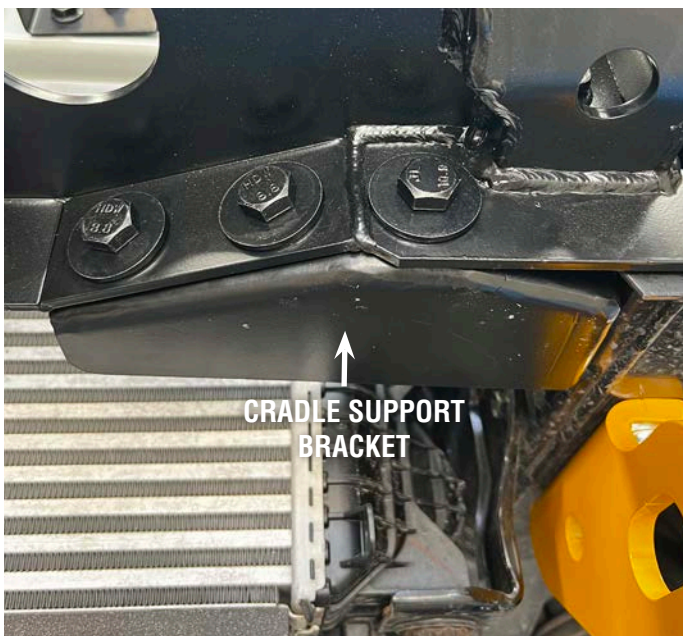
INSTALLATION INSTRUCTIONS



11. Bolt on the winch cradle with the 4 factory bolts at the front and 2x m12x25mm bolts, washers and nutsert inserted through front of chassis. Finger tight only (You may need to drill the holes on the chassis out slightly to allow for easier fitment)



12. Attach the cradle support brackets behind the winch cradle with 4 x M12x35mm bolts with flange nuts and 1 x M12x35mm bolt and nutsert. Once all bolts are in tighten firmly.



NAVARA BULLBAR

INSTALLATION INSTRUCTIONS



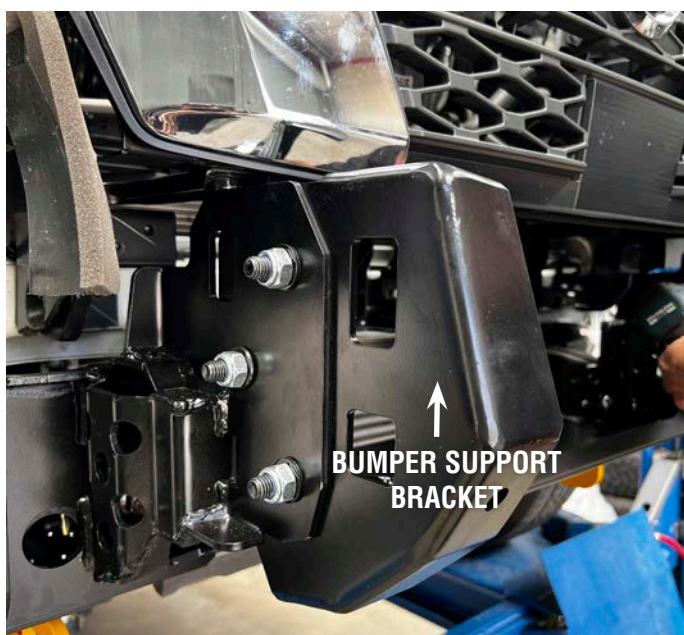
13. Attach grille support panel with 3 x M8x20mm Button bolts, M8 24mm washers and nylon lock nuts. Leave finger tight.



14. Refit grille, centre and tighten grille support bolts



15. Fit bumper support brackets with 3x M12bolts with washers and Nylon lock nuts, Leave finger tight. Place centre panel into position on bumper support panels, adjust alignment and tighten bumper support panel bolts.



16. Take centre panel off and bolt on the wings with M12x25mm bolts, washers and nylon nuts.



NAVARA BULLBAR

INSTALLATION INSTRUCTIONS



17. Insert the M6 Cage nuts into the wings, do not attach the grilles yet as you can use this hole to access lights and inner brackets.



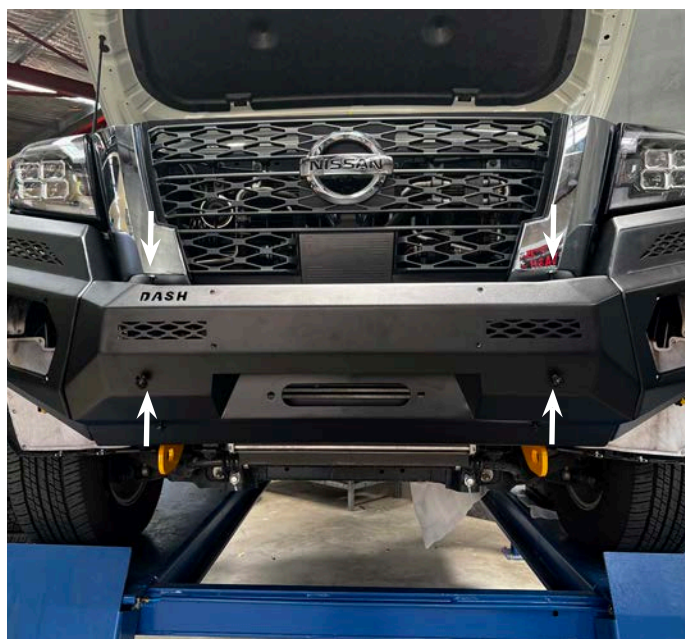
18. Mount top sidelights (if ordered) to the wings.
*Please Note: these must be wired to the high beam as they are too bright for daytime running lights.
Navara high beams are negatively switched so use wiring guide supplied at the back of these instructions.*



19. Mask prep and paint the bar stay area with black paint (this helps to create a visual shadow line)



20. Fit the bar with 4x M10x30mm Button bolts and washers. Finger tight first, align bar and then tighten. Be careful when tightening that the washer doesn't damage the paint on the bar.

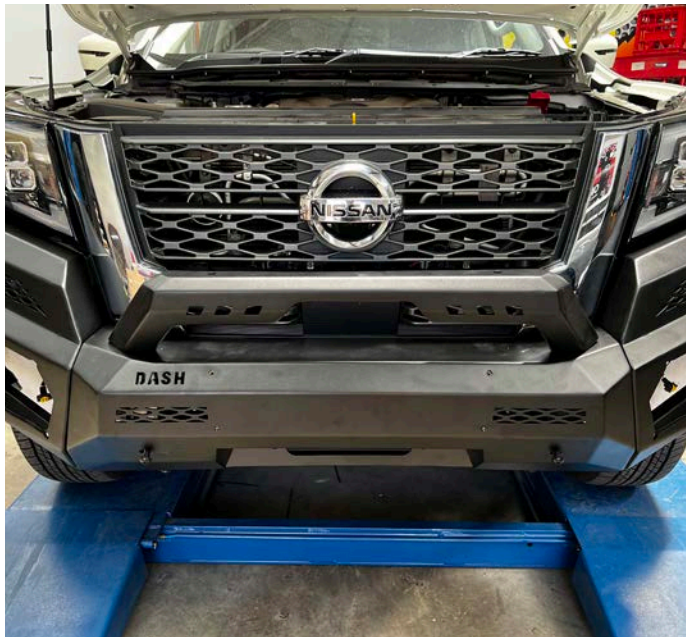


NAVARA BULLBAR

INSTALLATION INSTRUCTIONS



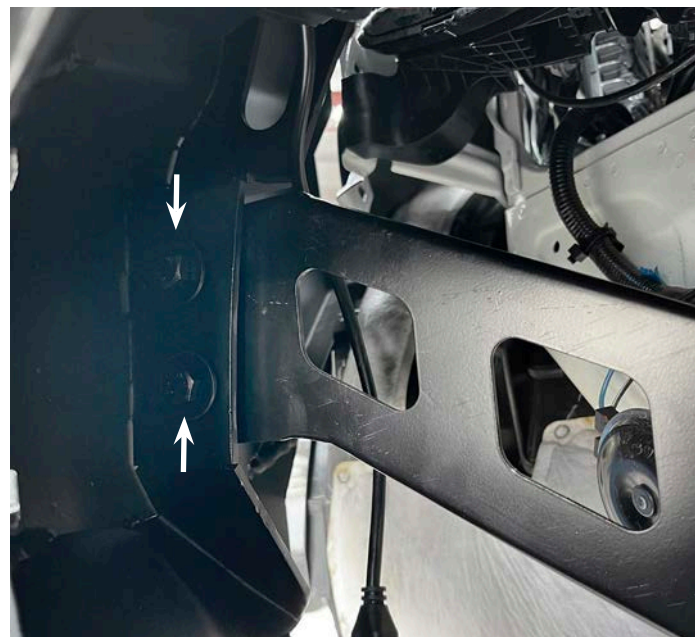
21. Fit the hoop bar with 4x M10x30mm Button bolts, washers and flange nuts.



22. Fit the number plate bracket with 4x M6x25mm bolts and washers



23. Attach the wing supports with M10x25mm bolts and washers. Bolt the bracket to the chassis first. Attach the bolts to the wing, finger tight, adjust wing to align with guard/headlight then tighten bolts.



NAVARA BULLBAR

INSTALLATION INSTRUCTIONS



24. Bolt the foglights to the back of the surrounds then attach to the wing with M6x20mm Button bolts.

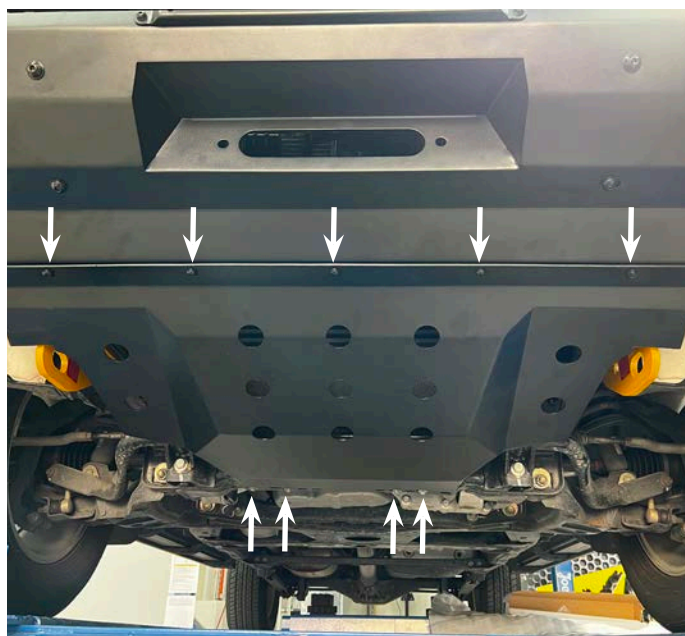


25. Attach the 5 nutserts to the bottom of the bar.

IF YOU DO NOT HAVE A RIVET GUN THESE CAN BE INSERTED MANUALLY - SEE 'DASH OFFROAD BASH PLATE INSTALL' ON YOU TUBE FOR MORE DETAILED INSTRUCTIONS ON THIS PROCESS



26. Fit the bash plate with 5x M6x20mm button bolts and washers to the front and reuse the 4 factory bolts in the rear.



NAVARA BULLBAR

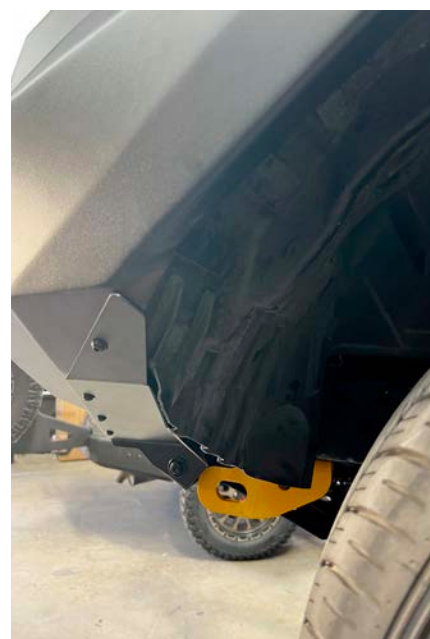
INSTALLATION INSTRUCTIONS



27. Fit the wing underplates with 4x M6x20mm button bolts with washers and 1 x M10x20mm bolt, washer and nylon nut



27. Finally you will need to trim the plastic inner guard. Below shows where to cut panel and final fitment.



NAVARA BULLBAR

INSTALLATION INSTRUCTIONS



WIRING FOR DRIVING LIGHTS

Navara NP300 - ST, STX with LED DRL in headlight

It has been identified that the high beam driving light circuit on the Nissan Navara NP300 is negatively switched. This means that the wiring harness for auxiliary driving lights should be connected as per instructions for negatively switched vehicles. Connecting the wiring harness as per instructions for positively switched vehicles will result in incorrect operation of the driving lights and could cause damage to the vehicle electrical system.

1. Connect positive (+) wire for driving light circuit (with 25amp fuse) to positive terminal of battery
2. Connect positive (+) wire for switch circuit (with 2amp fuse) directly to positive terminal of battery. **Do not connect to positive feed at headlight or high beam switching circuit.**
3. Connect earth wires from driving light circuit to vehicle ground.
4. Connect earth wire from relay to negative (-) switch wire for high beam circuit on passenger head light. This wire may need to be lengthened depending on location of the relay within the engine bay. The correct negative (-) switch wire is centre red wire in the connector on the back of the passenger headlight.

View from back of headlight

