

PredRBDual DASH DUAL ARM REAR BAR FITTING INSTRUCTIONS



1. Disassemble and remove the taillights and rear bumper bar as necessary.



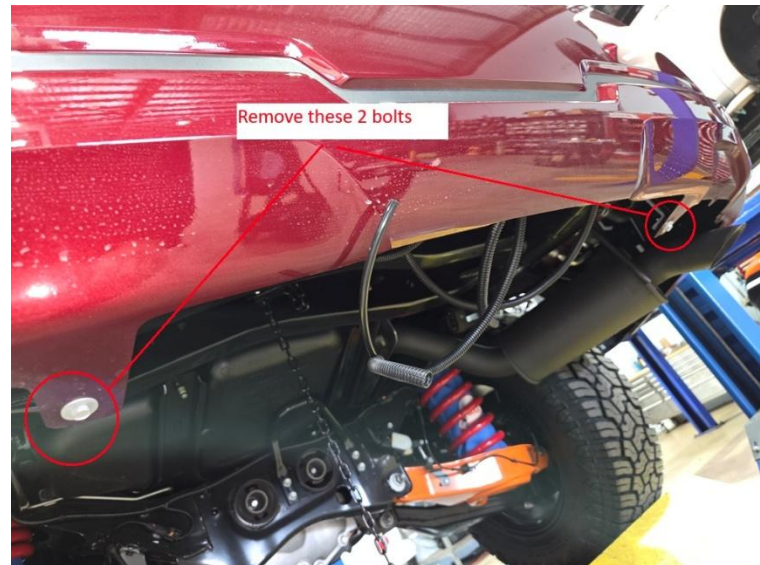
2. Remove mudflaps and bumper lower bolts.



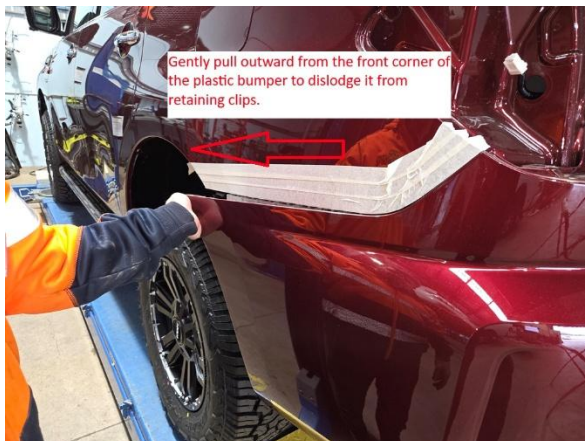
PredRBDual DASH DUAL ARM REAR BAR FITTING INSTRUCTIONS



3. Remove hidden inner guard bolts and rear lower bolts.



4. Apply masking tape to the rear quarter panel as shown. Carefully pull out the front corner of the plastic bumper to dislodge the retaining clips. Pull the bumper away from the car and disconnect the park sensor loom connector on the right side of the bumper.



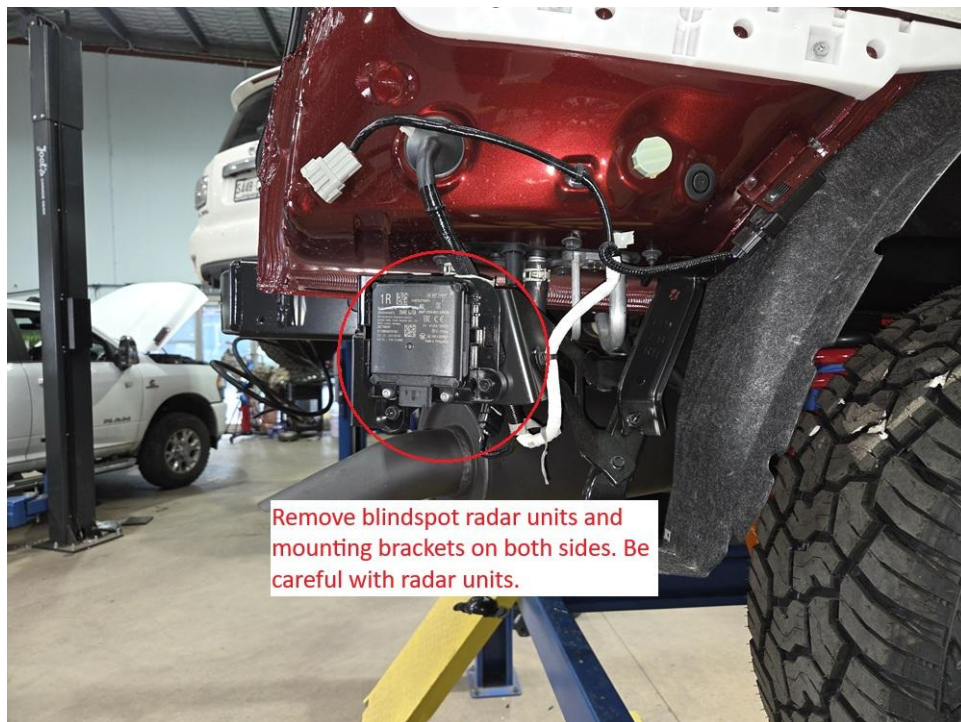
PredRBDual DASH DUAL ARM REAR BAR FITTING INSTRUCTIONS



5. Remove the Styrene bumper pads, the bumper support brackets, and the roadside tow point.



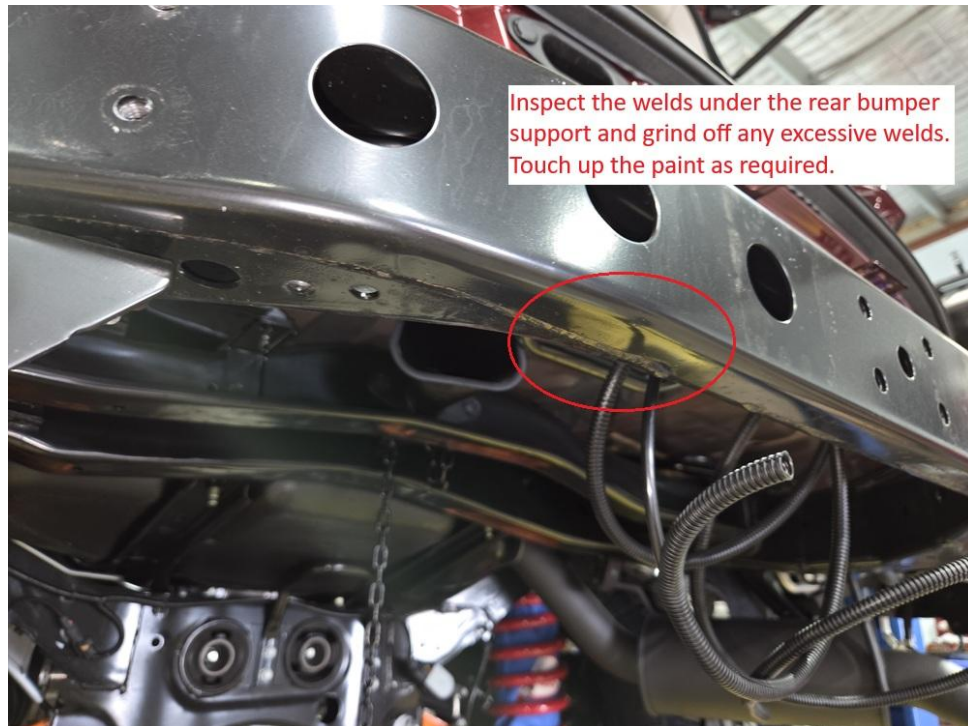
6. Remove the Blind spot radars and all of the mounting brackets. Be careful with the radars and keep them separate to refit on the same sides.



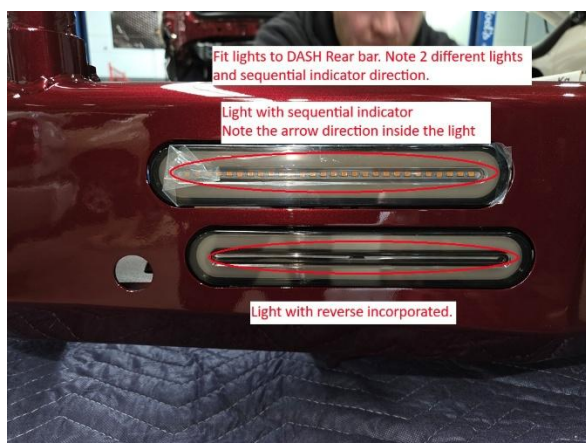
PredRBDual DASH DUAL ARM REAR BAR FITTING INSTRUCTIONS



7. Inspect underneath the rear main bumper support and grind off any excessive welds visible. Touch up with paint after grinding.



8. Prepare the DASH Rear bar by fitting the lights and radar units to the bar. Note the direction of the sequential indicators and the reverse light position.



PredRBDual DASH DUAL ARM REAR BAR FITTING INSTRUCTIONS



9. Remove the park sensors and park sensor loom from the factory bumper bar. Take note of the orientation of the park sensors as they need to be fitted in the DASH bar in the same direction. There are 2 modified park sensor loom extensions, which are for both outer park sensors. Fit the supplied sensor bezels into the DASH bar so the sensors will sit horizontally. Connect the 2 modified park sensor loom extensions to the outer park sensors, then fit the outer sensors with the connectors facing the outside of the bar.



10. Secure and cable tie all looms above the mount plate, so they won't get crushed when fitting the rear bar.



PredRBDual DASH DUAL ARM REAR BAR FITTING INSTRUCTIONS



11. Solder the 2 core wires onto the wire tails on the rear bar loom for the number plate light, and heat shrink.



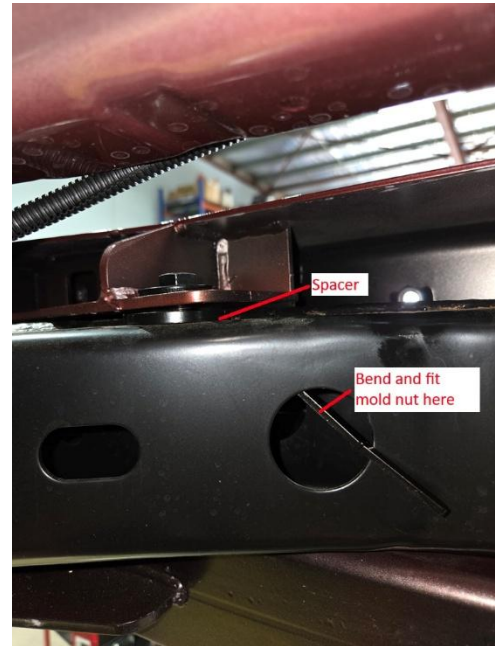
12. Using 2-3 people, lift the rear bar into position and fit the 6 x M12 x 1.25 bolts 50mm long with the large washers into the Towbar mounting holes under the chassis. Fit the 4 M12 x 1.25 30mm bolts with washers into the rear mounting holes.



PredRBDual DASH DUAL ARM REAR BAR FITTING INSTRUCTIONS



13. Fit the 2 x M8 x 40mm bolts in the sides of the bar. Fit the mold nut into the bumper support, fit the spacer, and bolt with a washer loosely.



14. Tighten the 4 rear M12 bolts until they are firm only. Tighten the 6 x Chassis mounting bolts to 92nm, then tighten the 4 rear bolts to 92 nm also, tighten the 4 side M8 bolts as required. Tighten the 2 top mounting bolts.

PredRBDual DASH DUAL ARM REAR BAR FITTING INSTRUCTIONS



15. Measure the distance from the DASH rear bar up to the rear quarter panels in various positions on both sides of the vehicle. Transfer and mark these measurements onto the factory bumper bar and add 10-20mm to the measurements.



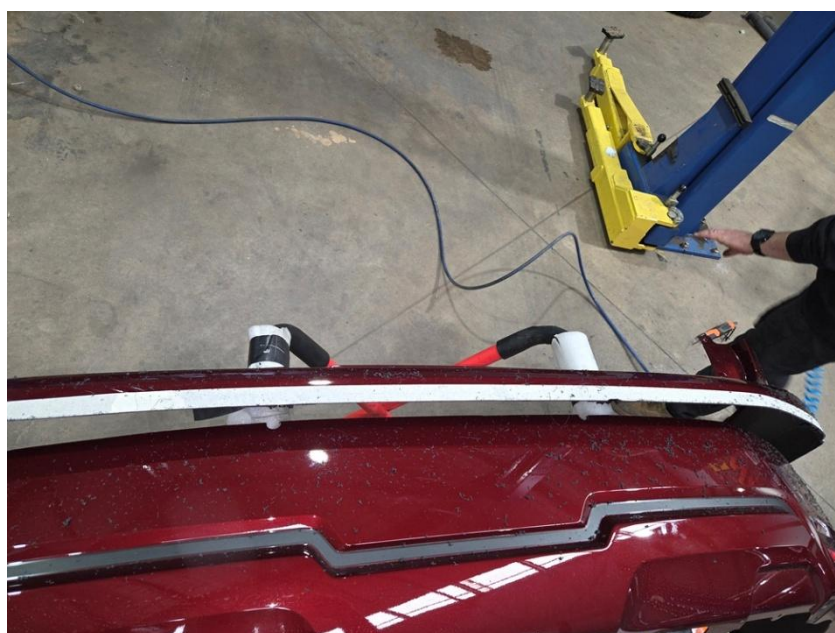
PredRBDual DASH DUAL ARM REAR BAR FITTING INSTRUCTIONS



16. Mark these measurements in various positions on the factory bumper. Put masking tape on the bumper above the marks to create a cut line.



17. Confirm you have allowed 10-20 mm extra for the first cut. This will allow the bumper to be fitted and marked in place. Cut the bumper along the marked line with an air hacksaw or similar.



PredRBDual DASH DUAL ARM REAR BAR

FITTING INSTRUCTIONS



18. Carefully refit the bumper in place. Clip into position and inspect fit. Mark around the bumper 10mm up from the DASH bar. Remove and retrim the bar, refit, and test fit. You may have to repeat this step a few times until an even 10mm gap is achieved between the DASH bar and the plastic bumper. Clean up the cut edge, fit, and trim the supplied pinch weld. You can use some silicone spray to help fit the pinch weld to the cut edge.

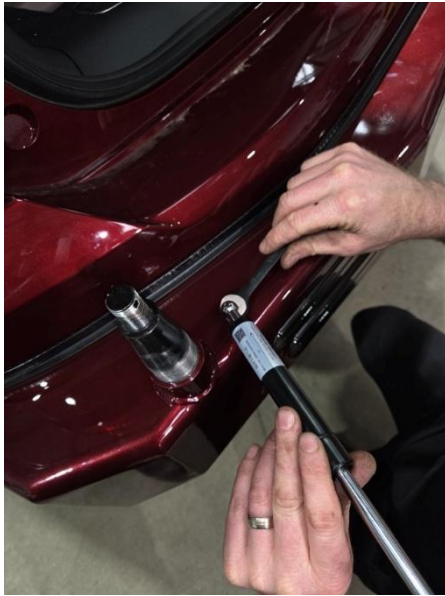


19. Refit Bolts in inner guards and refit clips, and bolts behind taillights. Refit the taillights. Reconnect the blind spot radars and the park sensor loom.
20. Grease the bearings for the swingarms. Fit the larger bearing into the bottom of the swing arms and fit the seal. Only push the seal in until flush with the lower step.
21. Attach the larger end of the gas strut to the rear bar.
22. Fit the 2 swing arms but keep loose so they can open past 90 degrees. Fit gas struts to arms, close arms past 90 degrees, and adjust bearings. Fit Alloy caps with an O-ring. Fit handles as required.
23. Dismantle as required and relocate the reverse camera. [LINK HERE TO INSTRUCTIONS](#)

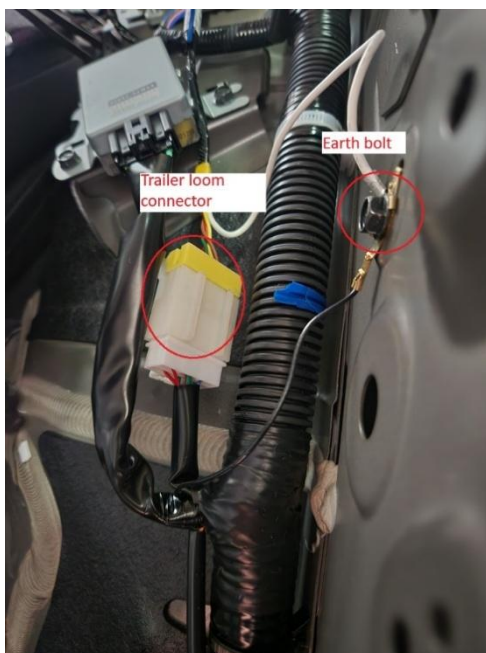
PredRBDual DASH DUAL ARM REAR BAR FITTING INSTRUCTIONS



24. Fit the camera to the camera plate. Note, there are 2 different camera plates included. 1 plate is for up to 2024 Update, and including the 2025 update, the other plate is for the 2024 update model.



25. Run the wiring loom for the rear lights into the quarter panel through the grommet in the bottom of the left rear guard, with the inner plastic panel removed, connect to the factory trailer wiring plug, and connect the earth wire to the 10mm bolt nearby.



PredRBDual DASH DUAL ARM REAR BAR FITTING INSTRUCTIONS



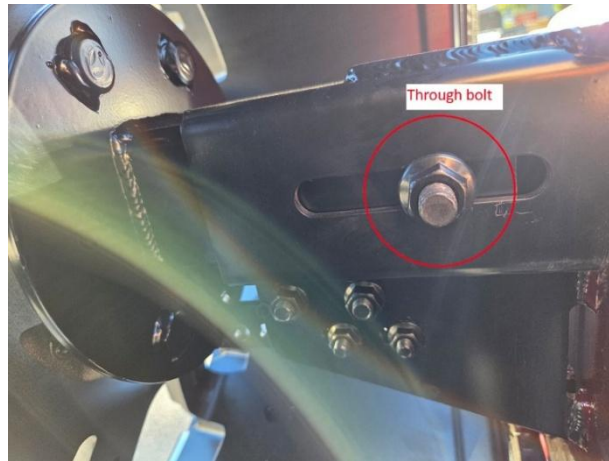
26. Attach the jerry can holder to the swing arm as required. Attach the Jerry can locking brackets at both ends of the Jerry can holder. Attach the number plate light to the number plate light bracket. Drill a small hole in the plastic bumper behind the Jerry Can arm spindle. Feed the 2-core wire out through the hole and around the spindle. Cover the loom in conduit. Run the wire inside the tube under the Jerry Can holder and up through the hole towards the number plate mount. Connect the number plate light and mount the bracket.



PredRBDual DASH DUAL ARM REAR BAR FITTING INSTRUCTIONS



27. Attach the spare wheel mounting head. Fit the long through bolt but leave it loose. Fit the spare wheel and tighten the mounting wheel nuts. Push the wheel into the swing arm and tighten the through bolt. Fit and tighten 4 other head mounting bolts.



28. Fit the Stubby holder tray if required and fit the Maxtrax Holder if required.



29. Trim the felt inner guard as required. Fit aftermarket mudflaps (not supplied).