

DASH
OFFROAD

**Y62 PATROL S5 TRIPLE
HOOP FRONT BAR**

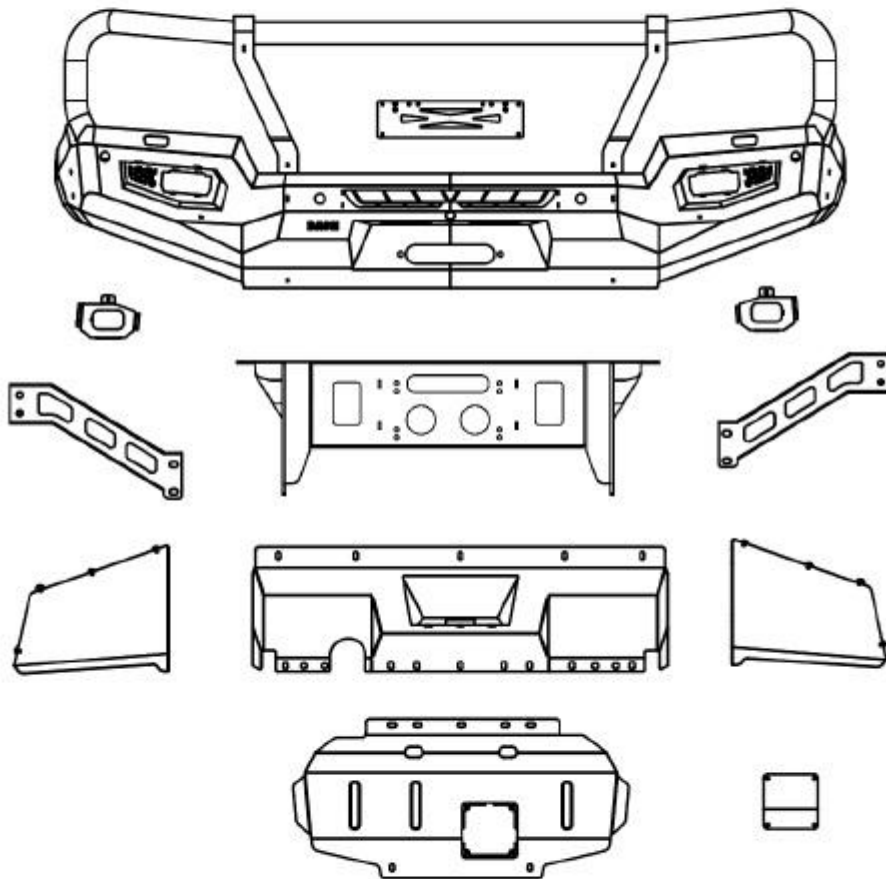


**INSTALLATION
INSTRUCTIONS**

Y62 SERIES 5 TRIPLE HOOP FRONT BAR FITTING INSTRUCTIONS



NISSAN PATROL Y62 TRIPLE HOOP FRONT BAR



instructions

Y62 SERIES 5 TRIPLE HOOP FRONT BAR FITTING INSTRUCTIONS



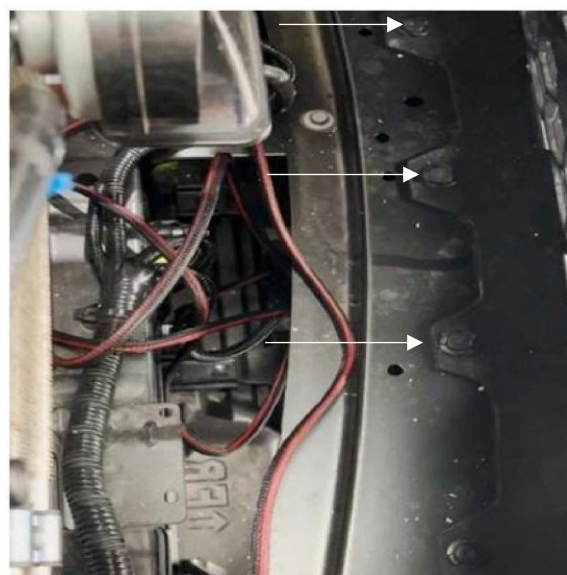
1. Remove the grille cover panel.



2. Release the 2 top grille clips.



3. Release the base grille clips and unplug the front view camera.



4. Remove the 2 lower splash panels.



Y62 SERIES 5 TRIPLE HOOP FRONT BAR FITTING INSTRUCTIONS



5. Remove the front splash cover and the factory bash plate.



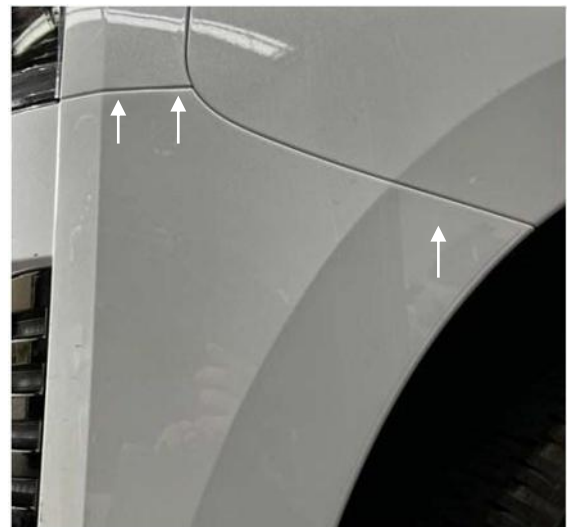
6. Under the driver's side headlight, disconnect the wiring loom to the park sensors and fog lights.



7. Under the driver's headlight, also disconnect the headlight washer hose, fold the hose back on itself, and cable tie to prevent fluid loss.



8. Unclip the inner wheel guard and remove the 3x10mm bolts on each side that hold the bumper to the guard. The bumper can then be pulled outward to dislodge.



Y62 SERIES 5 TRIPLE HOOP FRONT BAR FITTING INSTRUCTIONS



9. Remove both bumper stays.



10. Remove both headlight front bumper stays.



11. Unbolt the front radar unit (TiL Models Only) and move to the side to relocate later. (Ti models do not need relocation).



12. Remove the 2 air deflectors.



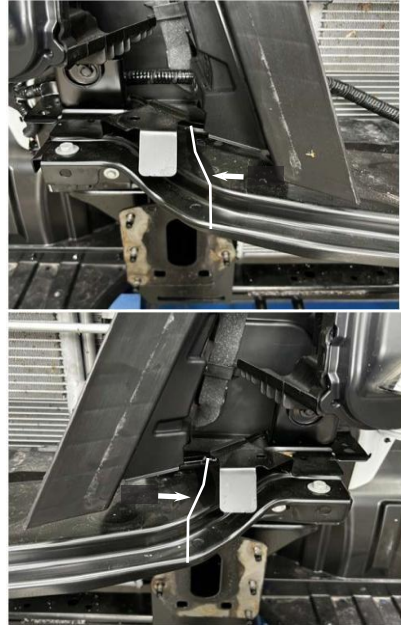
Y62 SERIES 5 TRIPLE HOOP FRONT BAR FITTING INSTRUCTIONS



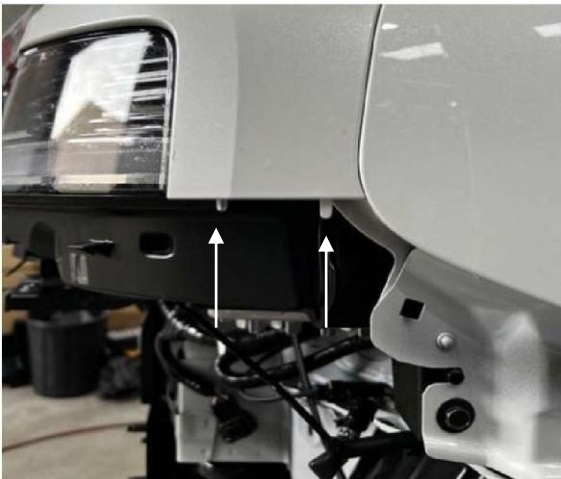
13. Remove the steel bumper reinforcement and retain the nuts. Clean and paint the bare metal on chassis mounts.



14. If fitting a winch, cut the grille support panel as shown and remove the centre section.



15. Trim off the 2 white tabs below on both sides.


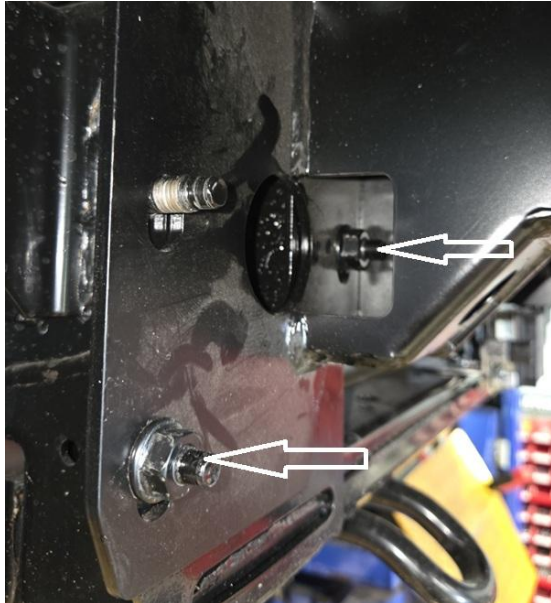


16. Mask up and paint the edge under the front of the guard black to create a shadow line.

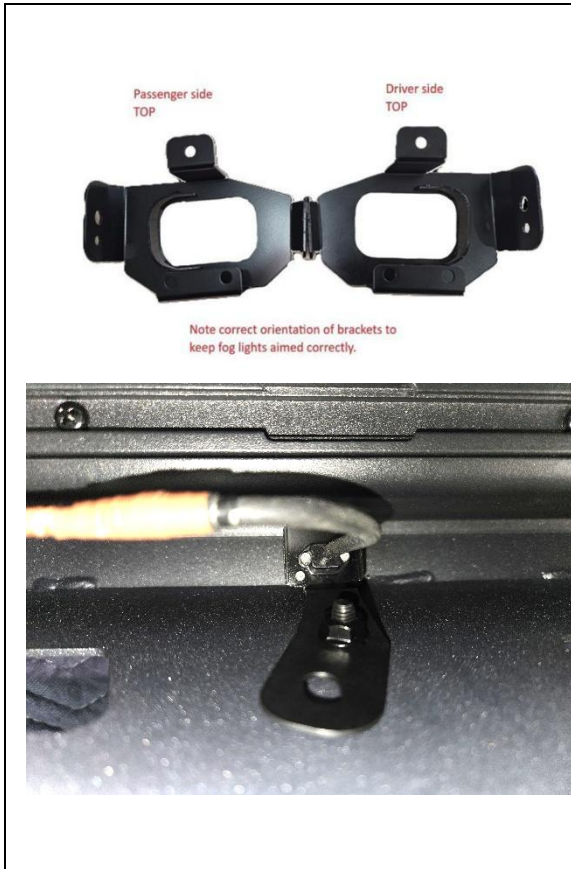


Y62 SERIES 5 TRIPLE HOOP FRONT BAR FITTING INSTRUCTIONS



<p>17. If you have a TiL, to relocate the radar, you will need to purchase the radar relocation bracket available on the Dash Offroad website. This mounts onto the lower brace in front of the radiator. You will need to insert captive nuts into the 2 existing holes, or drill the holes through and use bolts (Rivet nuts and bolts for this are not included in the kit)</p>  A close-up photograph of a black metal radar relocation bracket mounted on a blue metal frame. The bracket is positioned in front of a silver radiator grille. Two bolts are visible, securing the bracket to the frame.	<p>18. Fit the winch cradle into position and, using the factory nuts, fit the outside lower nuts and the 2 inside nuts and tighten. Note: If fitting a winch, do that now.</p>  A close-up photograph of a winch cradle being installed on a vehicle's front end. Two white arrows point to the factory nuts being used to secure the cradle. The cradle is a black metal component with a circular opening for the winch.
<p>19. Fit the premium fog lights in the bulbar or fit the factory fog lights with supplied brackets into the bar. Fit the Curved lightbar into position now, also. Remove the front camera from the grill, bend and shape the bracket to fit the camera under the Curved Lightbar. The bracket may require the top edge to be cut down slightly above the camera.</p>	<p>20. If using the PREMIUM fog lights, you will need to connect a wire from the factory parkers to the parker in the PREMIUM fog lights. The driver's side is blue wire, and the passenger side is Light Green.</p>

Y62 SERIES 5 TRIPLE HOOP FRONT BAR FITTING INSTRUCTIONS



21. Grab a mate and lift the bar into position and align the mounting bolt holes. Fit the M12x35mm mounting bolts with washers and flange nuts. Tighten up finger tight only at this stage.



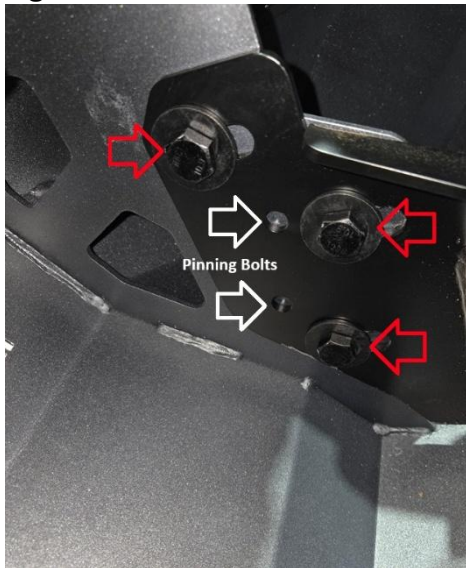
22. Align the wings and fascia, allowing an 18 – 20mm gap on the sides. A standard roll of insulation tape is great for this step. Allow an even gap under both headlights.



Y62 SERIES 5 TRIPLE HOOP FRONT BAR FITTING INSTRUCTIONS



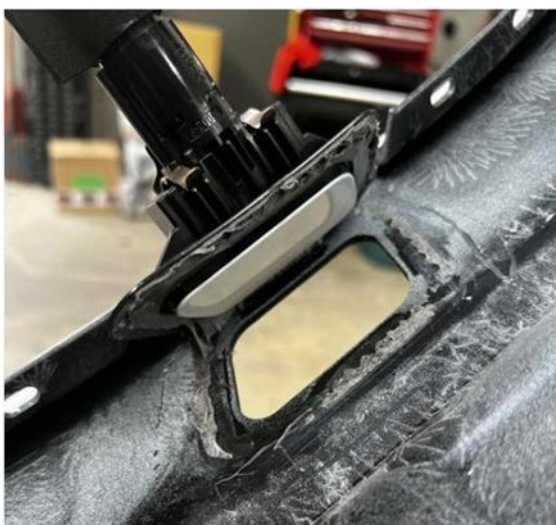
23. Tighten all 6 mounting bolts to 100nm. Drill out the 4 x M10 pinning bolt holes and fit the M10x30mm pinning bolts, washers, and flange nuts. Tighten to 55nm.



24. Fit the wing support brackets into position and fit all bolts and nuts as required. Tighten all bolts and nuts.



25. Remove the headlight washers from the factory bar. They are held on with double-sided tape. Carefully lever off and leave the tape attached to the washers.



26. The washers will be re-fitted on the opposite side to where they were, and the washer jets will need to be rotated 180 degrees to spray in the opposite direction.



Y62 SERIES 5 TRIPLE HOOP FRONT BAR FITTING INSTRUCTIONS



27. Use Sikaflex or similar to glue the headlight washers in position and apply tape as shown to secure until set.



28. Remove the Washer Hose and the park sensor wiring loom from inside the factory bumper. Fit the washer tube and loom back into the bulbar and connect the washer tube.

29. The park sensor bezels supplied will require the outer locking tabs filed flush. Then fit the bezels and refit the original park sensors.



30. Cable tie the park sensor loom along the support and use the supplied park loom extensions to connect the park sensors.



Y62 SERIES 5 TRIPLE HOOP FRONT BAR FITTING INSTRUCTIONS



31. If using the optional PREMIUM fog lights, cut the connector off of the fog light loom and connect the wires to the fog light as shown. Connect the parker at this time as well.



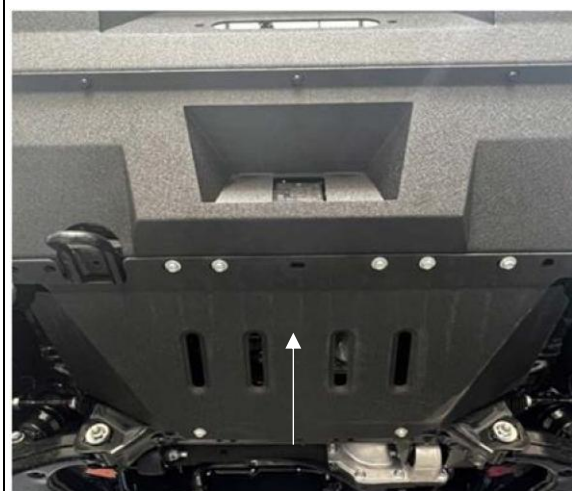
32. Once fog light operation is checked, fit the wing infill panels and tighten. NOTE: Recommend a thread locker or similar to be applied.



33. Fit the radar cover panel.



34. Fit the front bash plate using the original factory bolts.



Y62 SERIES 5 TRIPLE HOOP FRONT BAR FITTING INSTRUCTIONS



35. Mark and cut the inner wheel arch liners then flex in above the wing infill panels.



36. Once the light bar or spotlights are wired up, re-inspect the front bar for correct alignment. Refit the grille and top cover panel. If you have any issues during installation, please contact DASH Offroad, and we will be happy to help you along the way.