

**DASH**  
**OFFROAD**

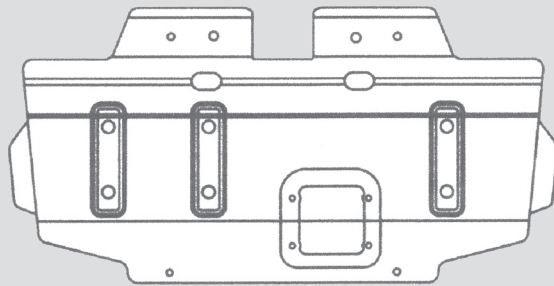
**UNDERBODY  
PROTECTION**



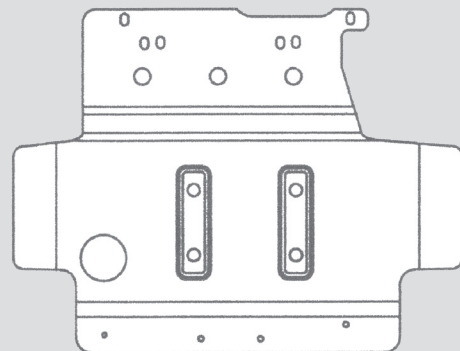
**INSTALLATION  
INSTRUCTIONS**

# UNDER BODY PROTECTION

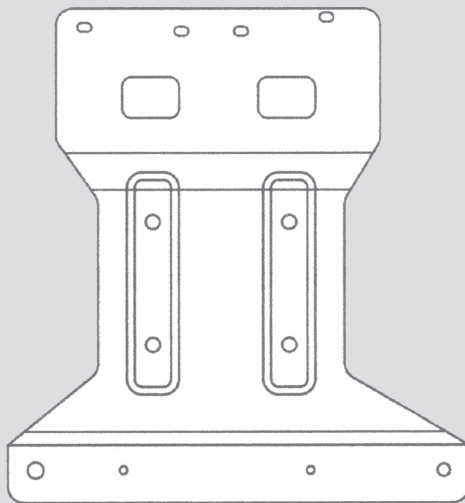
## INSTALLATION INSTRUCTIONS



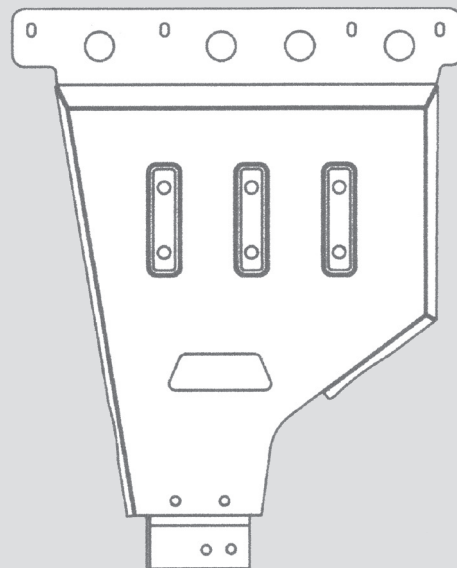
BASHPLATE 1



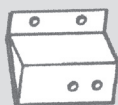
BASHPLATE 2



BASHPLATE 3



BASHPLATE 4



REAR BRACKET



OIL FILTER COVER



M8X15 HALFROUND BOLT



M8X20 HALFROUND BOLT



M8X30 HALFROUND BOLT



M10X30 HALFROUND BOLT



M10 MOULD CLAMP



M10 WASHER



M8 WASHER



M10 CAGE NUT



M10 FLANGE NUT



M10 MOULD CLAMP



CYLINDRICAL BOLT



M8 PULL RIVET NUT

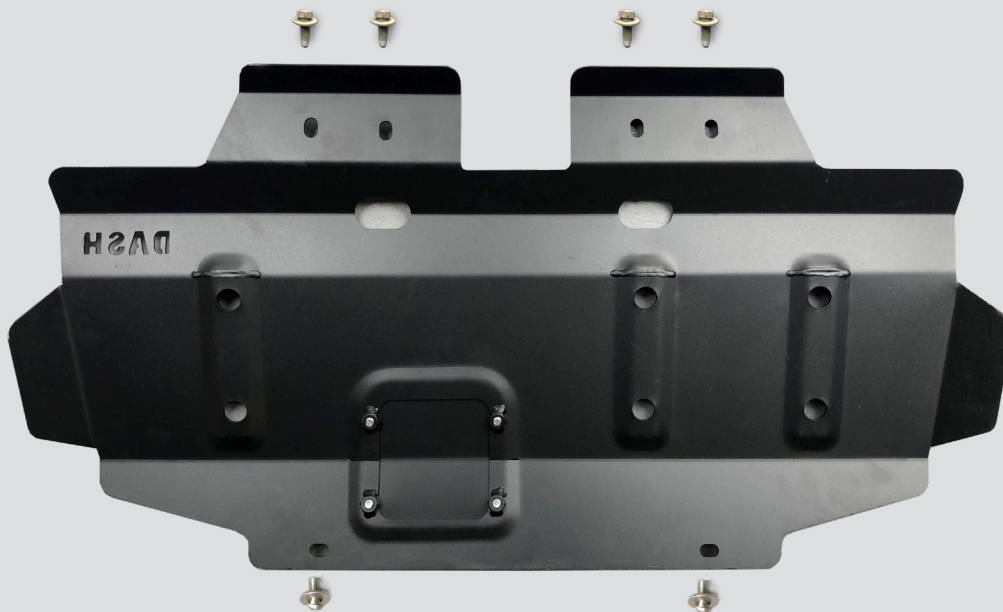


# UNDER BODY PROTECTION

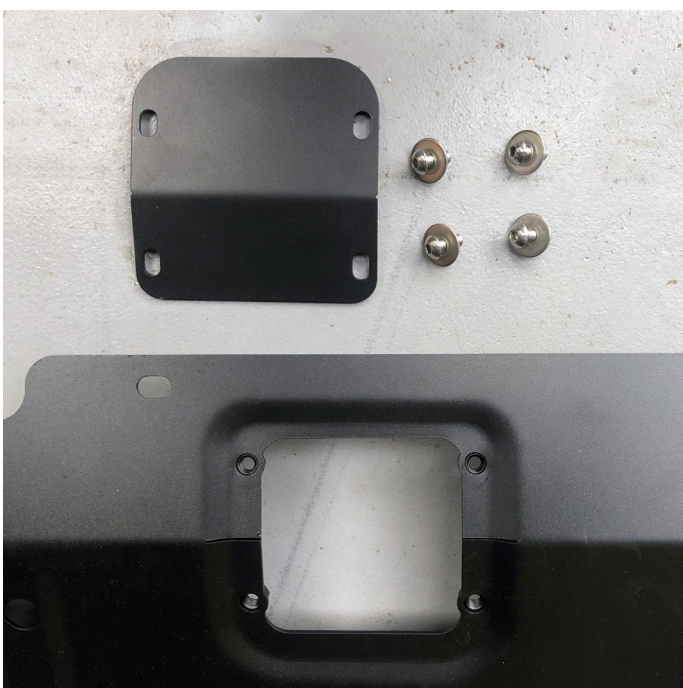
## INSTALLATION INSTRUCTIONS



### BASHPLATE 1



- 1 Remove factory bash plate - retain bolts
- 2 Loosen lower bullbar plate (if installed) as front of first plate needs to slide under the bullbar plate
- 3 Before installing bashplate 1 fit the oil filter cover to bashplate 1 using the M8x15mm bolts.
- 4 Place Bashplate 1 into position and hand tighten the front 4 bolts reusing the factory bolts



OIL FILTER COVER & BASHPLATE 1



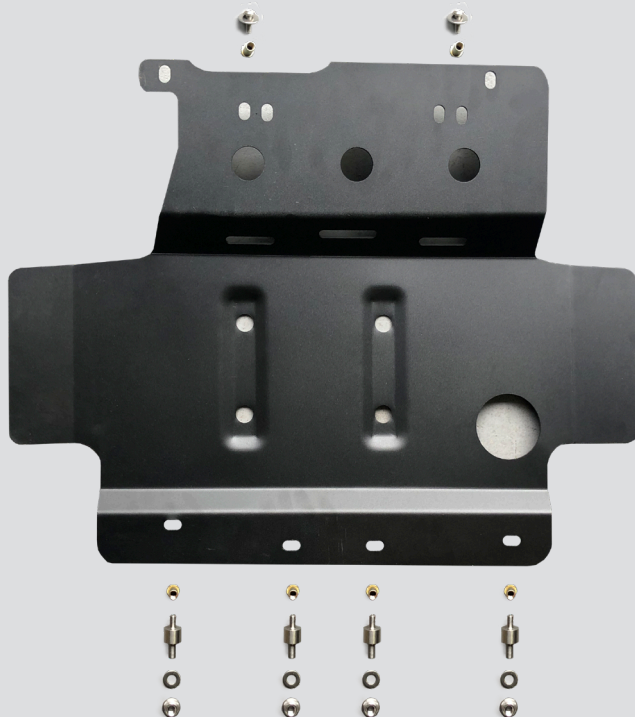
FRONT OF BASHPLATE ONE HELD IN PLACE WITH FACTORY BOLTS

# UNDER BODY PROTECTION

## INSTALLATION INSTRUCTIONS



### BASHPLATE 2

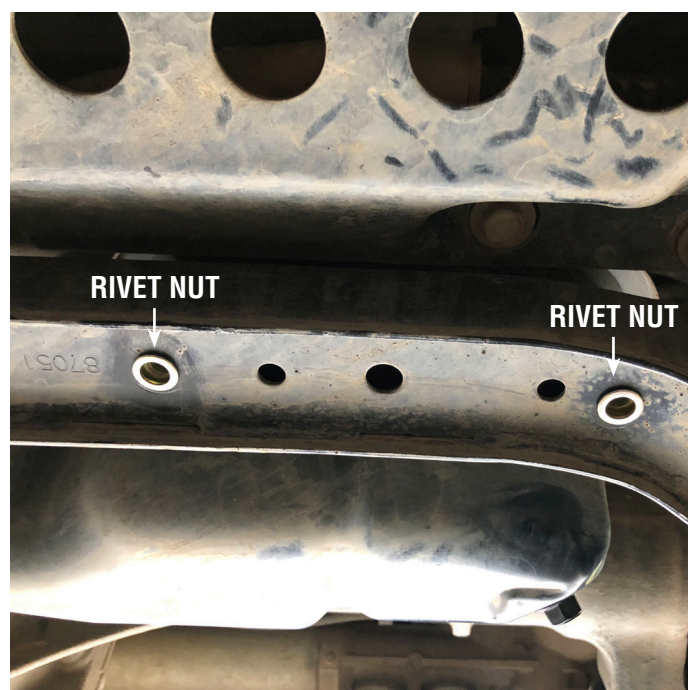


- 5 Before installing Bashplate 2 you will need to insert the Pull Rivet Nuts. Two rivet nuts need fixing into the front rail for the front of bashplate 2 and four rivet nuts into the back rail for bashplate 2

IF YOU DO NOT HAVE A RIVET GUN THESE CAN BE INSERTED MANUALLY - SEE YOU TUBE INSTALLATION FOR MORE DETAILED INSTRUCTIONS ON THIS PROCESS



RIVET NUT INSERTED ON FRONT RAIL



RIVET NUT INSERTED ON BACK RAIL



# UNDER BODY PROTECTION

## INSTALLATION INSTRUCTIONS



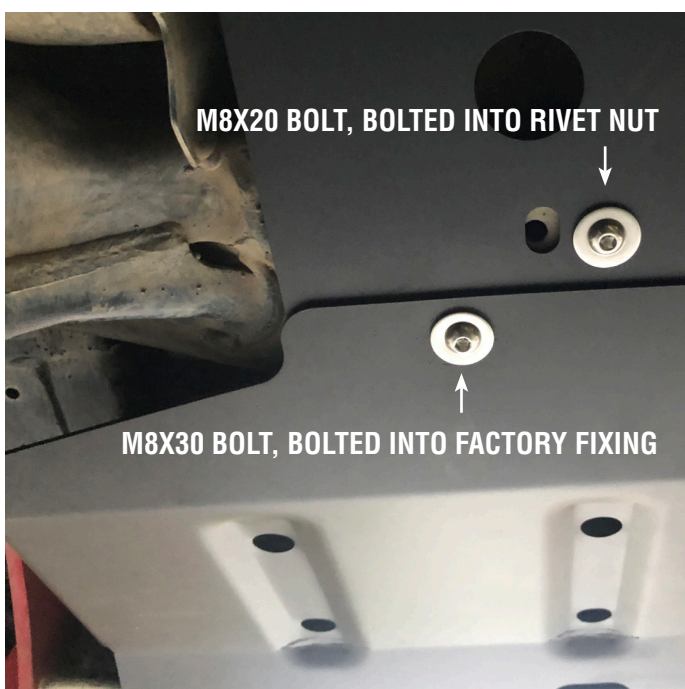
- 6 Inset the four cylindrical bolts into the four rivet nuts on the back rail



ONE OF FOUR CYLINDRICAL BOLTS INSERTED INTO BACK RAIL

- 7 Place bashplate 2 into position (ensuring it underlaps plate 1). Attach two M8x20 Bolts into the rivet nuts at the front of bashplate 2.

- 8 Attach two M8x30 Bolts into the factory fixings at the back of bashplate 1



BASHPLATE 1 & 2 BOLTED TO FRONT RAIL

# UNDER BODY PROTECTION

## INSTALLATION INSTRUCTIONS



### BASHPLATE 3



- 9 Place bashplate 3 into position (ensuring it underlaps plate 2) and hand tighten the 4 M10 flange nuts



BASHPLATE 2 & 3 BOLTED TO BACK RAIL

# UNDER BODY PROTECTION

## INSTALLATION INSTRUCTIONS



### BASHPLATE 4



10 Before installing bashplate 4 bolt the rear bracket onto the rear of the plate using M10x30 Bolts and M10 nuts.



REAR BRACKET BOLTED TO BACK OF BBASHPLATE 4

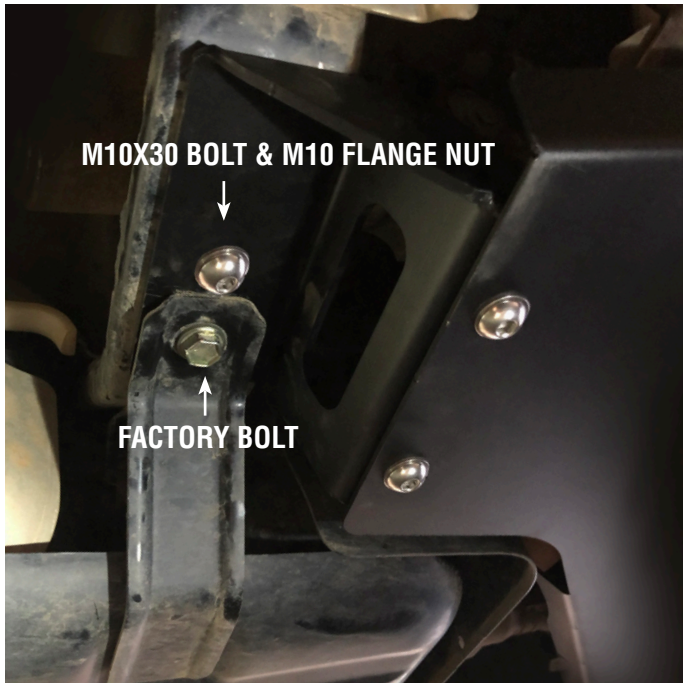


# UNDER BODY PROTECTION

## INSTALLATION INSTRUCTIONS



11 Remove the fuel tank guard bolt as this is used to help attach the rear bracket.

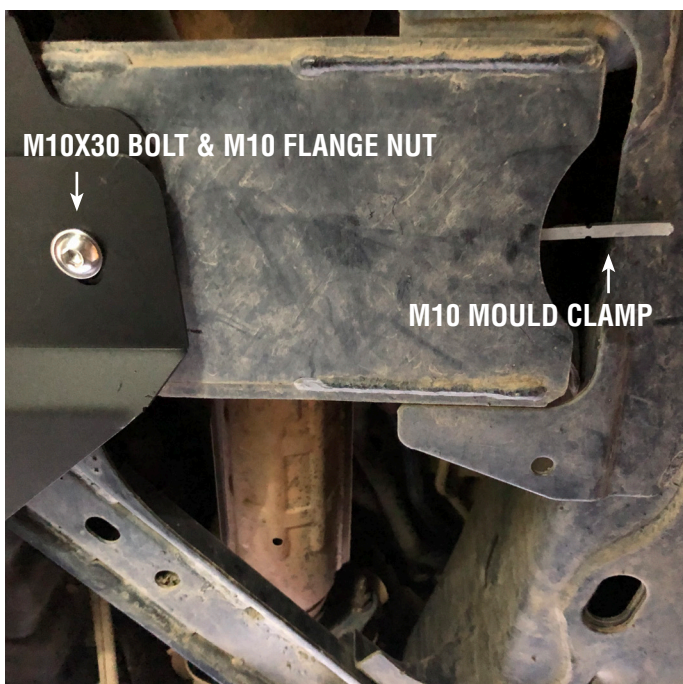


REAR OF BASHPLATE 4 BOLTED INTO POSITION

12 Insert bashplate 4 (ensuring it underlaps plate 3). Bolt the rear bracket first using the factory fuel tank guard bolt and one M10x30 bolt and M10 Cage Nut. To hold the cage nut in position use the shorter M10 Mould clamp.

13 Bolt up the front of bashplate 4 using the outer 2 holes. Use two M10x30 bolts and two M10 Cage Nut. To hold the cage nuts in position use the two longer M10 Mould clamp.

Finally Tighten up all bolts and you are finished.



DETAIL OF BASHPLATE 3 & 4 BOLTED TO CROSS MEMBER



BASHPLATE 3 & 4 BOLTED TO CROSS MEMBER