

# PredRBV2Textured CENTRE ARM REAR BAR INSTRUCTIONS



1. Remove the taillights.



2. Pull the taillight loom and grommet out and disconnect the taillight. Remove the plastic clip on both sides.



# PredRBV2Textured CENTRE ARM REAR BAR INSTRUCTIONS



3. Remove the factory rear bar facia and mudflaps. Pull back the inner guard liner to access the 10mm bolt on both sides.



4. Remove all bolts and clips from the Bar facia as shown.

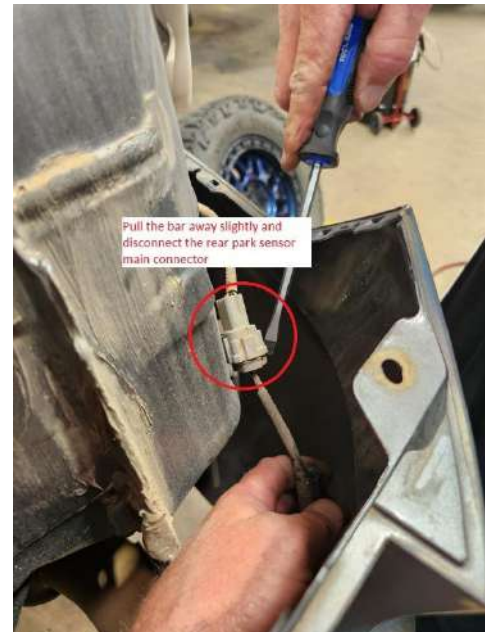




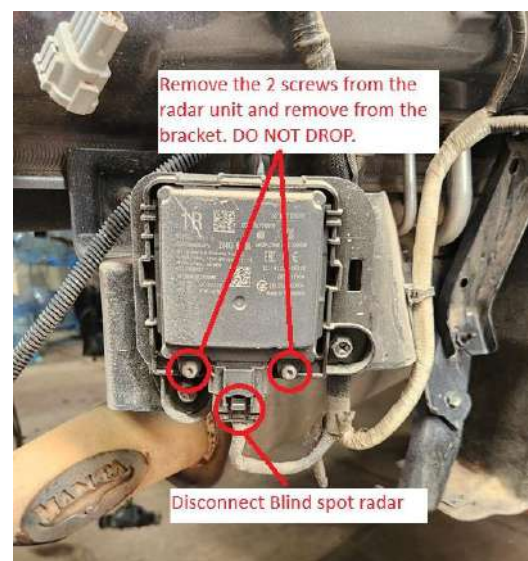
# PredRBV2Textured CENTRE ARM REAR BAR INSTRUCTIONS



5. Gently pull out on fascia ends to dislodge plastic retainers. Carefully pull the bumper away from the vehicle and disconnect the park sensor main connector. Put the bumper aside on a soft surface. Remove white polystyrene packing and discard.



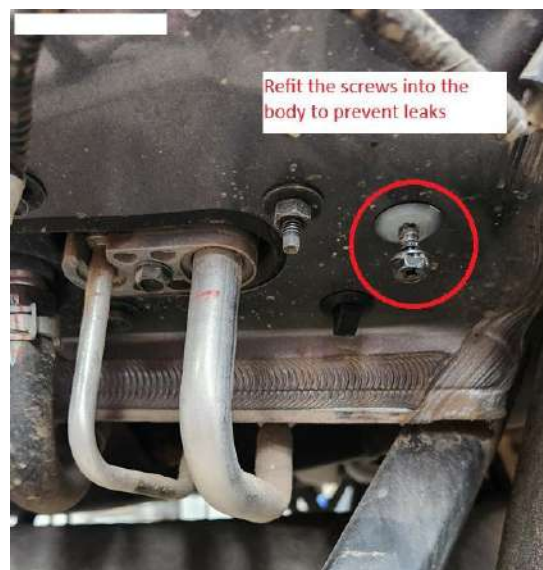
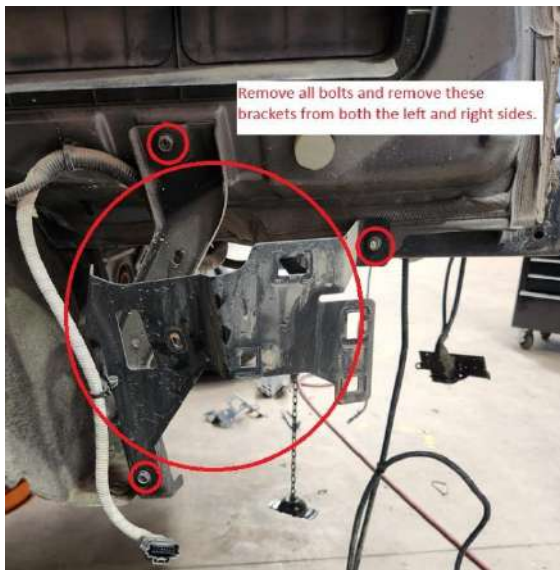
6. Remove these 2 brackets and discard. Disconnect blind spot radars and remove radar from the brackets. **Be careful with radars and don't mix up left and right.**



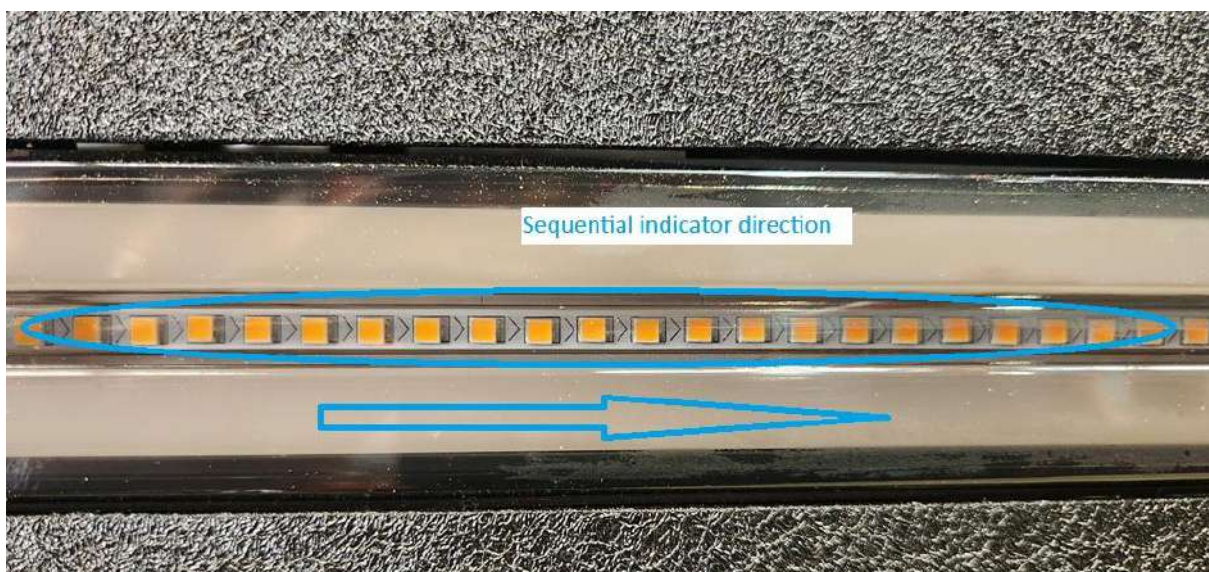
# PredRBV2Textured CENTRE ARM REAR BAR INSTRUCTIONS



7. Remove all radar brackets from both sides. Refit screws back into body holes to prevent leaks.

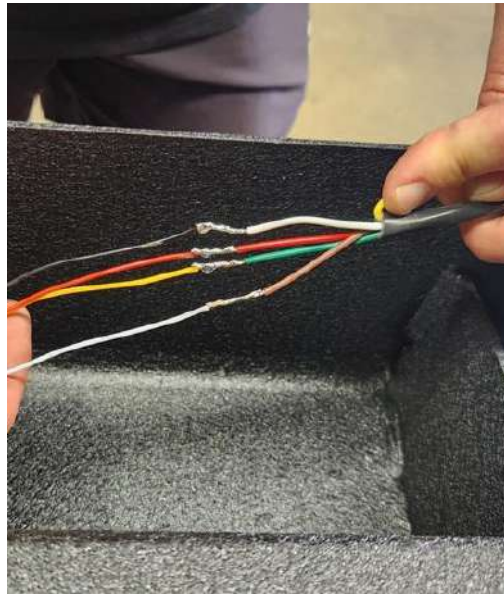


8. Fit lights and Radars into the rear bar as required. NOTE: indicators are directional check arrows inside lights. Wire up lights using 5-core trailer wire and leave 1m of wire to run into the car.





# PredRBV2Textured CENTRE ARM REAR BAR INSTRUCTIONS



9. Run the camera relocation loom inside the bar and ensure it won't get trapped when fitting it. Fit Park sensor bezels, fit sensors, and loom taken from the original rear bar. NOTE: May have to extend some of the sensor looms. Wire up the 2core wire for the number plate light that will be mounted on the swing arm.



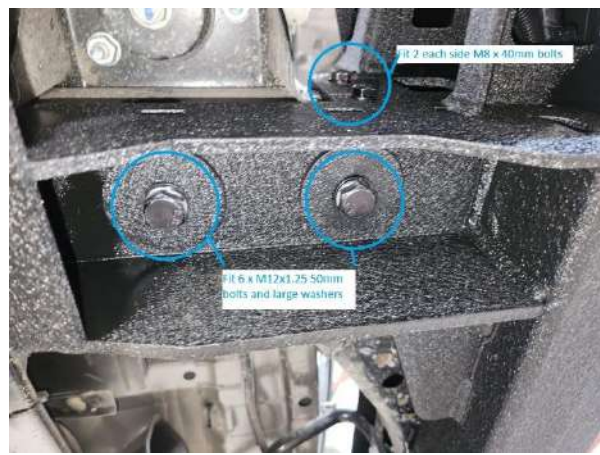
# PredRBV2Textured CENTRE ARM REAR BAR INSTRUCTIONS



10. Mount Radars onto radar brackets as shown. May need to add a few washers to space radar from the bracket. Bolt radar and brackets into the bar.



11. With the assistance of 2 more people lift bar and sit in place ensuring the bar is fully seated. Fit the 6 M12x1.25 50mm bolts with the large washers to attach the bar under the 2 chassis rails(finger tight only). Fit the 4 M12x1.25 30mm bolts the rear attachment point. Fit 4 x M8x50mm bolts 2 each side.





# PredRBV2Textured CENTRE ARM REAR BAR INSTRUCTIONS



12. Once all main bolts are fitted tighten the 10x M12 bolts to 92nm and tighten 4x M8 bolts firmly.



13. Fit 2x spacers to top mounting points between the bar and rear chassis support. Insert long reach nut into chassis and align with hole. Fit 2x M10x30mm bolts and tighten.



# PredRBV2Textured CENTRE ARM REAR BAR INSTRUCTIONS



14. Run light wiring loom into the vehicle through the rubber loom grommet in the bottom of the left rear quarter as shown. Wire in lights to the trailer wiring loom as required. Check and confirm the correct light operation.



15. Tape up both left and right quarter panels as shown. Measure the distance down from quarter panel to the Dash rear bar top on both sides and record the distance.





# PredRBV2Textured CENTRE ARM REAR BAR

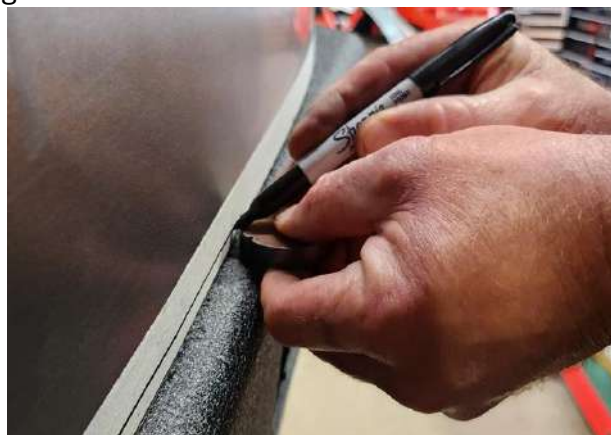
## INSTRUCTIONS



16. Support factory bumper fascia as shown. Measure the distance as recorded and mark it onto the original bumper fascia. Add 10 to 20mm onto the measurement to allow for trimming. Place masking tape on the bumper to guide cutting the bumper. **NOTE: Double-check measurements before cutting the bumper.** Carefully cut the bumper using an Air hacksaw or similar.



17. Refit the top section of the rear bumper to the vehicle. Clip into position but don't bolt up. Using a 10mm spacer mark a line around the bar as shown using the Dash bar as a guide.



# PredRBV2Textured CENTRE ARM REAR BAR INSTRUCTIONS



18. Remove the bar again and trim as required. May need to repeat this process a couple of times until an even gap of 10mm between the original bar and the Dash bar is achieved. Remove the trimmed bar once again and de-bur the cut edge. Fit the supplied pinch weld onto the cut edge. **TIP: Spray some silicone lube or similar into the pinch weld to help fit onto the cut edge.** Refit bumper as required and inspect for correct fit.



19. Locate the swing arm bearings and seal. Check the correct fit of bearings onto the spindle. May need to clean up and remove paint from the spindle with an emery tape or similar. Once both bearings fit correctly onto the spindle, Grease the bearings and fit into the swing arm. Carefully fit the seal in the bottom of the bearing housing on the swing arm and lubricate the spindle and seal.





# PredRBV2Textured CENTRE ARM REAR BAR INSTRUCTIONS



20. Drill a small hole in the plastic bumper in line with the spindle. Run the number plate wire loom out through the hole. Insulate loom as required. Place swing arm onto spindle but keep arm open more than 90 degrees, fit top bearing, washer, and nut loosely. Fit gas strut and tighten. Close the swing arm slightly past 90 degrees until the arm drops down and tighten the large nut on the bearing until just firm with no free play in the arm.



21. Attach the swing arm latch, adjust it, and tighten it as needed. Fit the spare wheel flange using the longest bolt, but don't tighten it. Fit the spare wheel to the arm. Push the wheel towards the vehicle fully, then tighten the head bolt. Fit the other bolts to the head and tighten.



# PredRBV2Textured CENTRE ARM REAR BAR INSTRUCTIONS



22. Fit the spare wheel and attach the number plate holder bracket. Run a 2-core wire up through the swing arm and allow some slack to open and close the swing arm. run cable through spare wheel flange. Fit a waterproof connector to the number plate light and 2-core loom to allow disconnection to remove the spare wheel.
23. Fit acrylic radar covers and bearing cap. Trim inner guards to suit. Fit the reverse camera (removed from the tailgate) to the camera bracket and connect and attach it to the rear bar. (camera bracket may require modification depending on year model) **NOTE: For camera relocation see instructions on our website.**  
<https://www.dashoffroad.com.au/install-guides/>

