

DASH
OFFROAD

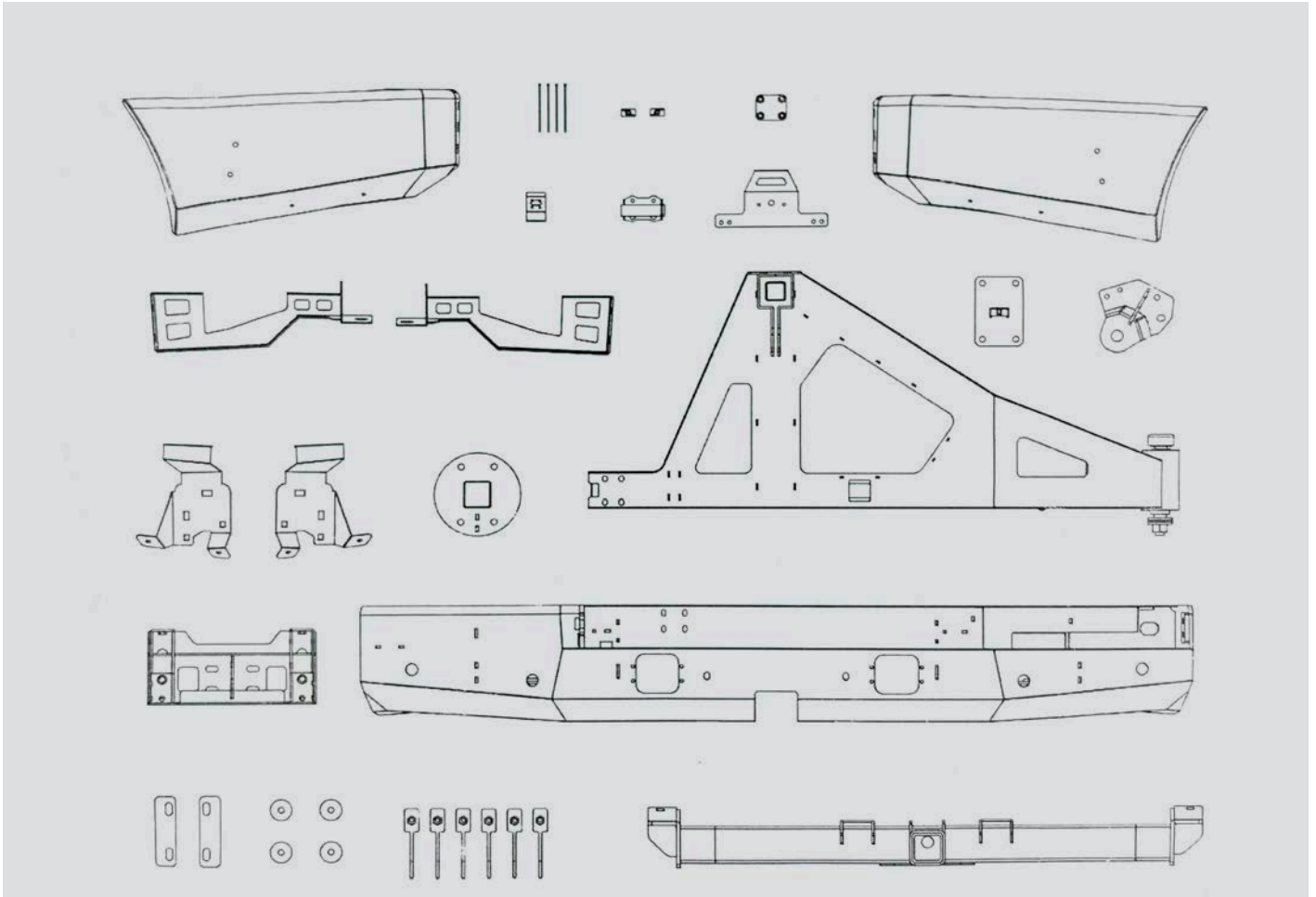
Y62 PATROL
REAR BAR



INSTALLATION
INSTRUCTIONS

Y62 PATROL REAR BAR

INSTALLATION INSTRUCTIONS




 **8 X M6X20MM BOLTS**

 **2 X M6X25MM BOLTS**


 **8 X M8X20 MM FLANGE**

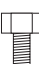
 **4 X M8X25 MM FLANGE**

 **2 X M8X30 MM FLANGE**

 **4 X M8X40 MM FLANGE**

 **6 X M10X40MM BOLTS**

 **4 X M12X25MM BOLTS**

 **6 X M12X55MM BOLTS**


 **8 X M6X20MM BUTTON HEAD BOLTS (BLACK)**

 **8 X M8X20MM BUTTON HEAD BOLTS (BLACK)**

 **12 X M8X25MM BUTTON HEAD BOLTS (BLACK)**

 **1 X M10X30MM BUTTON HEAD BOLTS (BLACK)**

 **4 X M10X40MM BUTTON HEAD BOLTS (BLACK)**

 **4 X M10X40MM BUTTON HEAD BOLTS (BLACK)**

 **1 X M12X100MM BOLTS**


 **8 X M12X50MM FLANGE BOLTS (Towbar Bolts)**

 **18 X M6 WASHERS (BLACK)**

 **34 X M8 WASHERS (BLACK)**

 **4 X M8X20MM WASHERS (BLACK)**

 **20 X M10 WASHERS (BLACK)**

 **11 X M12 WASHERS (BLACK)**

 **14 X M6 FLANGE NUTS**

 **24 X M8 FLANGE NUTS**

 **14 X M10 FLANGE NUTS**

 **1 X M12 FLANGE NUTS**

LICENSE PLATE LIGHT

D-SHAPED PIN

GAS STRUT

Y62 PATROL REAR BAR

INSTALLATION INSTRUCTIONS



1. Remove bumper clips and lower bolts on side and rear.



2. Remove bolt above mud flap behind inner guard rear.



3. Remove mud flaps



4. Remove lower plastic cover under bumper on both sides of the car



Y62 PATROL REAR BAR INSTALLATION INSTRUCTIONS



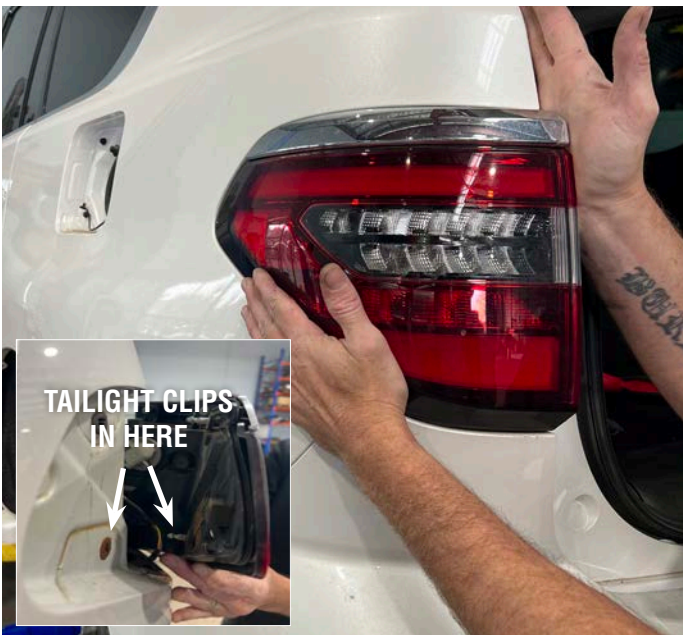
5. Unplug the reverse sensors loom



6. Take cover off side of taillight and remove the bolts behind it that hold the taillight on.



7. To remove the taillight you will need to push the rear of the light outwards to pop the clip on the side of the taillight



8. Remove the clip on top of the bumper and then pull the sides of the bumper out slightly and pull the bar firmly backwards to unclip the bumper.



Y62 PATROL REAR BAR INSTALLATION INSTRUCTIONS



9. Remove the Bumper foam



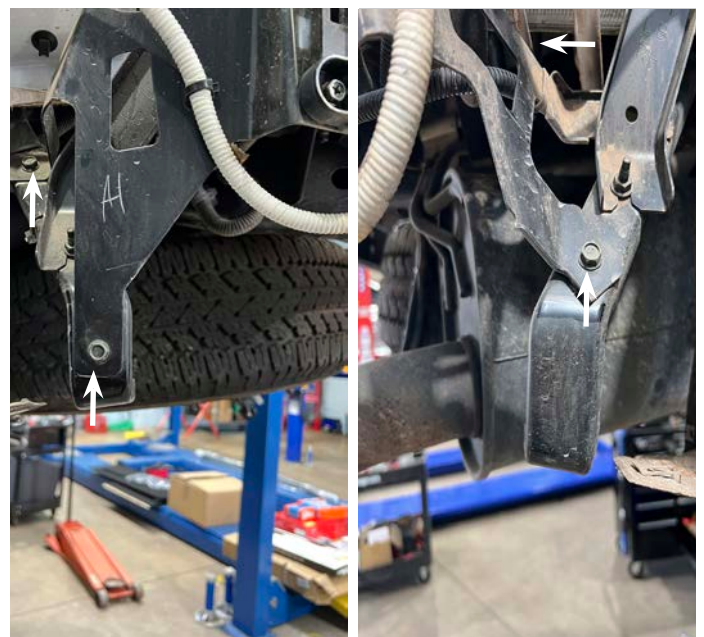
10. Remove the 3 bolts on each side of the towbar



11. Remove the 4 bolts from the back of the towbar and remove towbar.



12. Unplug and unbolt the side radar units (if fitted)



Y62 PATROL REAR BAR

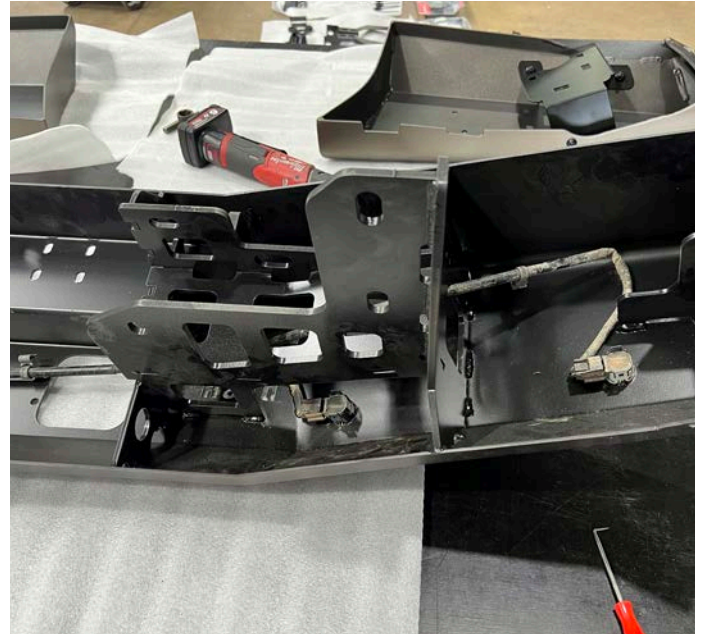
INSTALLATION INSTRUCTIONS



13. Fit the centre bracket with 4x M12x25mm Bolts with washers and Nuts.



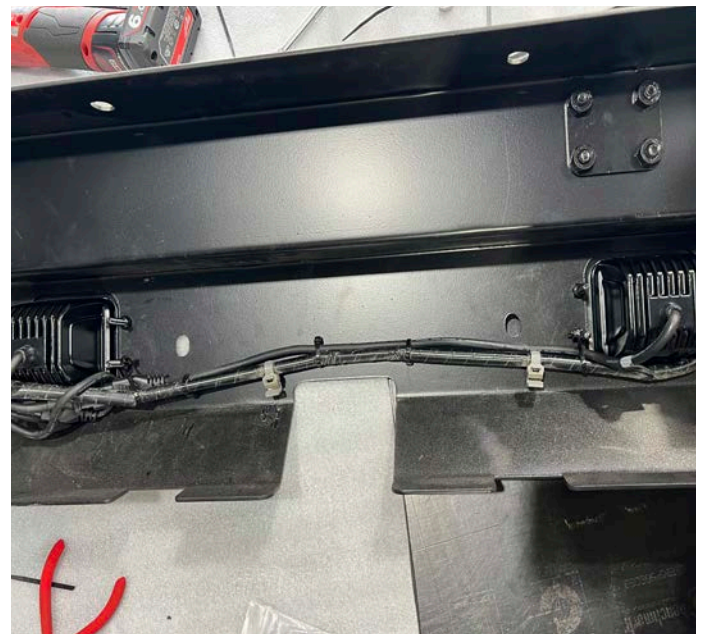
14. Fit the Reverse sensors/loom to the bar with the sensor bezels - align the sensors the same as they came out of the factory bumper



15. Fit the reverse lights with the fitting hardware packaged with the lights



16. Extend the reverse light wiring with the 3 metre 2 Core wire provided and cable tie to sensor loom along the lower side of the bar



Y62 PATROL REAR BAR INSTALLATION INSTRUCTIONS



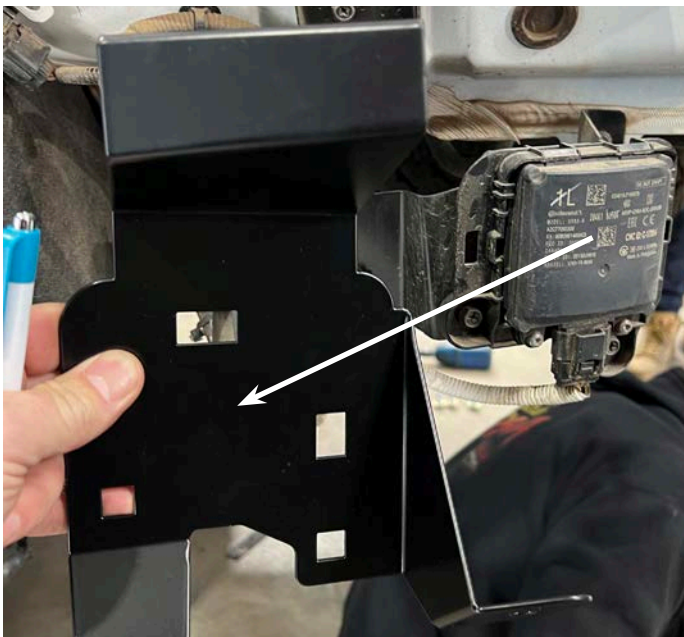
17. Mount the swing arm stopper with Stainless 12mm Bolts



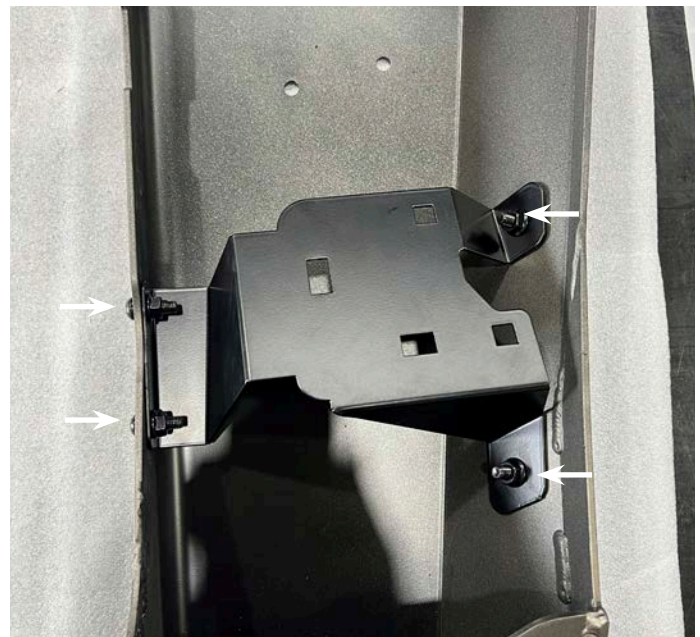
18. Mount the swing arm guide with Stainless 12mm Bolts



19. If car is fitted with side radar, Mount side radar to the new radar brackets with the factory radar brackets



20. Mount bracket and radar to the inside of the wings with M8x25mm bolts with washers and flange nuts

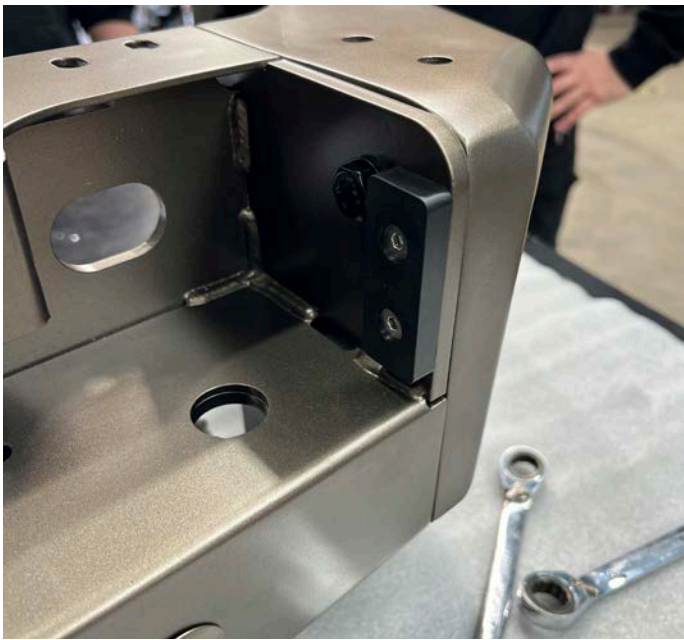


Y62 PATROL REAR BAR

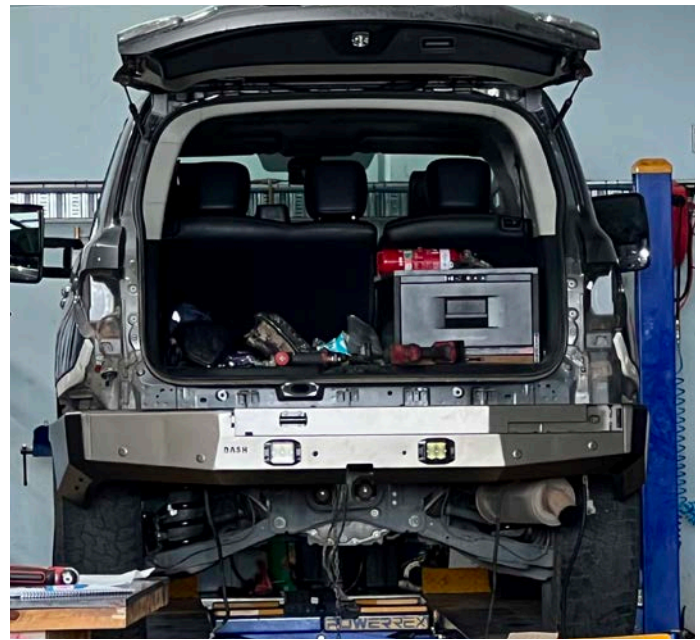
INSTALLATION INSTRUCTIONS



21. Bolt the wings onto the bar with 4x M10x30mm Bolts with washers and flange nuts



22. Place the assembled bar onto the Patrol



23. Bolt the wing brackets the bar with 2x M8x25mm Bolts with washers and flange nuts



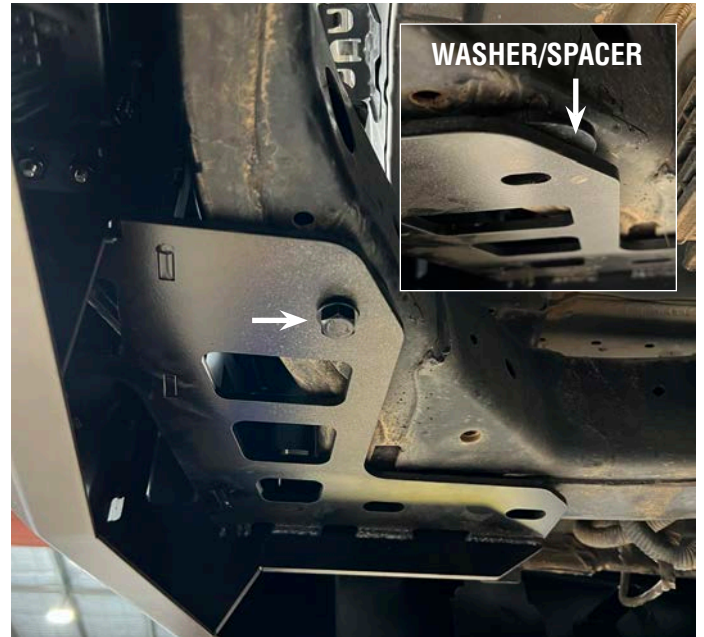
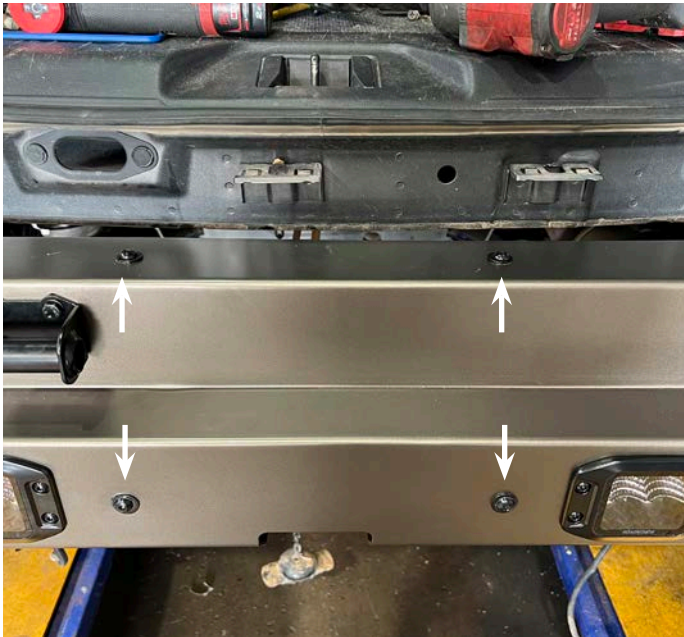
Y62 PATROL REAR BAR

INSTALLATION INSTRUCTIONS



24. Bolt the centre panel with 4x M8x25mm Bolts with the 20mm outer diameter washers and flange nuts

25. Bolt under the bar with the M12x40mm Bolt and Captive Nut on rod inside the chassis (you will also need to insert one of the large washer/spacers) between the chassis and the bar.



26. Bolt the centre of the tow bar with M12x50mm Flange Bolts



Y62 PATROL REAR BAR INSTALLATION INSTRUCTIONS

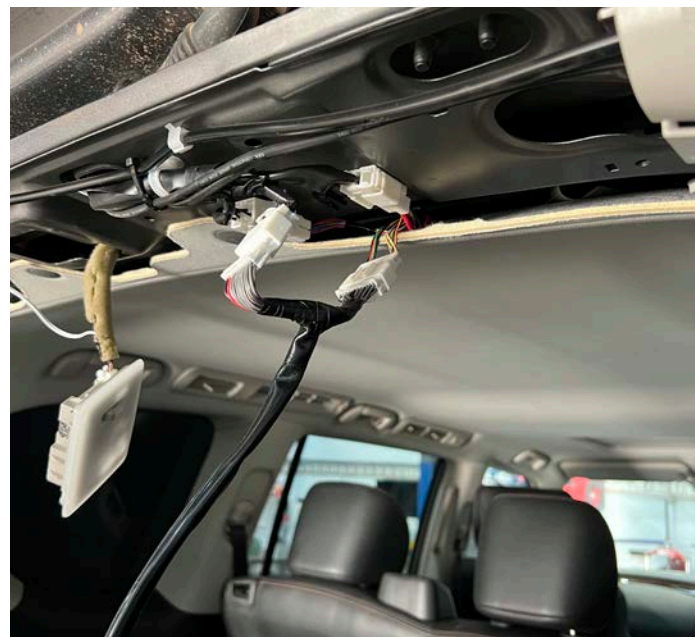
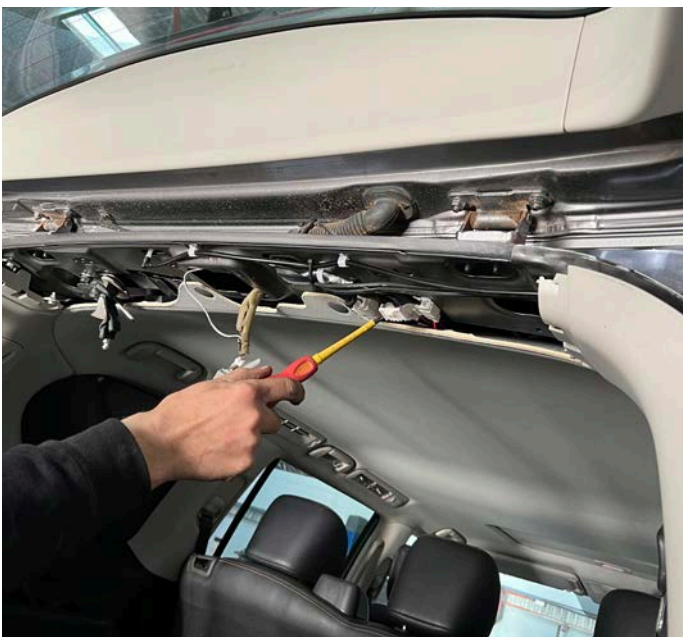


27. Bolt the sides of the tow bar with M12x50mm Flange Bolts. (Place the spacer under the 2 rear bolts) Torque all bolts to 92Nm



28. Remove the cover inside the rear and locate the reverse wiring plug

28. Fit the camera relocation loom into either side of the plug



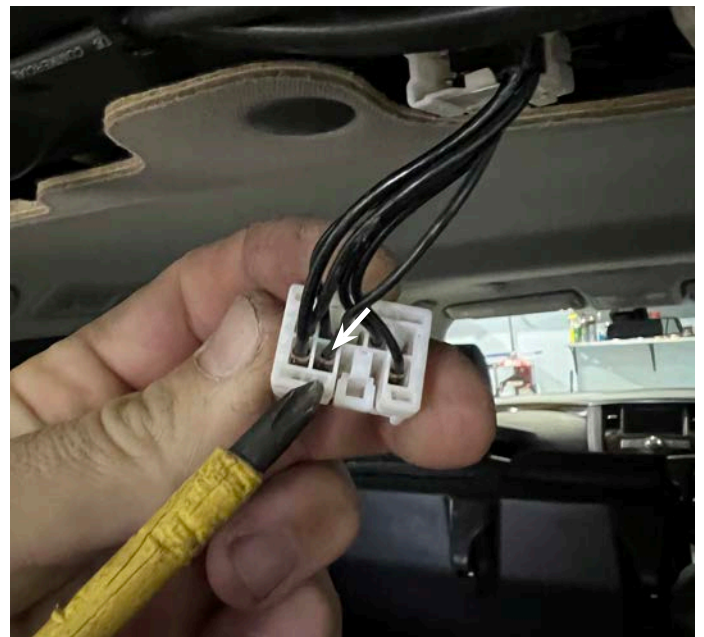
Y62 PATROL REAR BAR INSTALLATION INSTRUCTIONS



29. Feed the loom down the RHS panel and into the hole at the bottom and out at the base of where the taillight goes. Feed the reverse wire from the new reverse lights up along the same path as the camera loom came down



30. Remove the plug marked below and wire the positive to the wire marked below (double check with a mutimetre first). The earth wire will need to be fitted to the the body (find a suitable place near the plug)
The trim can now be refitted to the rear inside



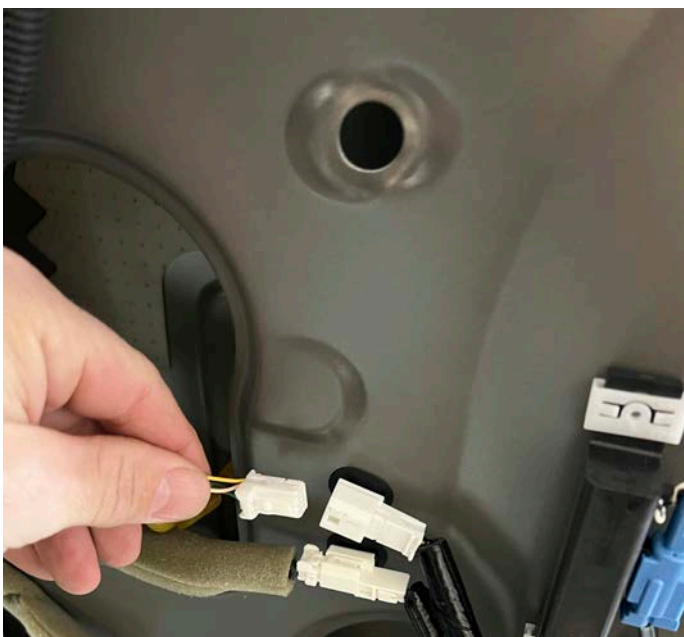
Y62 PATROL REAR BAR INSTALLATION INSTRUCTIONS



31. Remove the clips and the handle from the tailgate trim. Firmly pull the panel down to pop the clips and remove the panel



31. Unplug the reverse camera



32. Remove the 4 nuts holding the chrome tailgate handle on.



33. Remove the camera from the back of the chrome trim
Refit the chrome trim and tailgate plastic trim



34. Remove camera from factory bracket and unscrew the plug



35. Fit camera to new bracket



36. Fit camera to swing away arm with 2x M6x35mm bolts and flange nuts



Y62 PATROL REAR BAR

INSTALLATION INSTRUCTIONS



37. Run the second part of the camera relocation loom from the camera plug to the hinge side of the swing away arm. Also run the wire for the numberplate light from the hinge to the spare wheel mount. (this will be wired up at the end)



38. Assemble the swing away pivot by first greasing the bearing and assemble into the arm in the order below
Next insert the top bracket and main bolt in the order as indicated below



Y62 PATROL REAR BAR

INSTALLATION INSTRUCTIONS



39. Fit the swing away arm to the bar



40. Pack the left side up 10mm higher above level



41. Use the 3 spacing washers and Nut to bolt under the bar



42. Bolt the top bracket with 2x M10x40mm Button head bolts and 2x M10x40mm bolts.



Y62 PATROL REAR BAR

INSTALLATION INSTRUCTIONS



43. Fit the spare wheel carrier with 1x main bolt and Nut and 4xM8x20mm Bolts with flange bolts



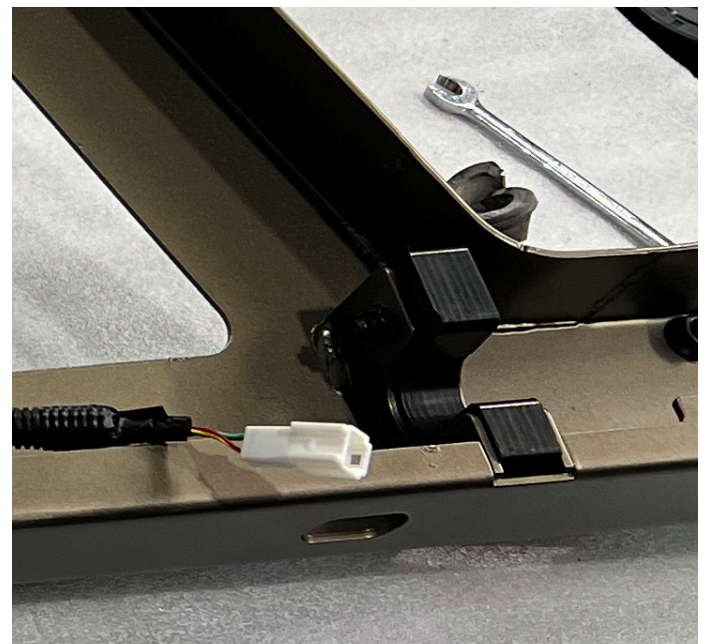
44. Slide the number plate bracket on



46. Fit the locating bar with M8 Bolts and Backing plate behind inside the bar. (Leave finger tight for now)



47. Fit the poly block to the inside of the swingaway arm



Y62 PATROL REAR BAR INSTALLATION INSTRUCTIONS



48. Bolt the latch to the swing away arm with M8x20mm Bolts with washers and flange nuts and leave finger tight



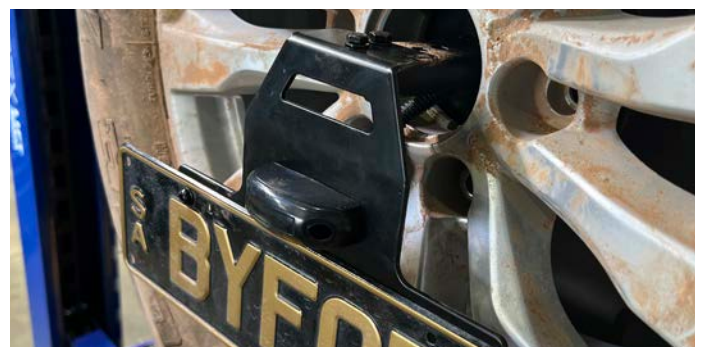
49. Fit the spare wheel



50. Now that the swing away hardware is loosely fitted and the spare wheel is on adding weight to the arm loosen the 2 Button head bolts on the swing away bracket slightly until the arm drops to level. You can now tighten the locating bar bolts and adjust the locking latch into position on the striker and tighten bolts



51. Fit the gas strut, mount the number plate bracket and light and wire up the light with the plug provided. Run the other end of the number plate light wire behind the bar and wire into the towplug loom.



Y62 PATROL REAR BAR

INSTALLATION INSTRUCTIONS



52. Before refitting the plastic bumper you will need to take measurements and mark up the bumper for cutting (It is recommended to cut less initially and fit and trim as needed until you get a neat fit).
Once cutting is complete fit the pinch rubber and fit the bumper

