

**DASH**  
**OFFROAD**

**JIMNY JB74 5 DOOR  
XL ROCK SLIDERS**



**INSTALLATION  
INSTRUCTIONS**

# Jimny XL JB74 5 DOOR ROCK SLIDERS FITTING INSTRUCTIONS



Side Step  
SUZUKI JIMNY

**BOLT KIT**

4*		M6*20	Hexagon socket head Screws	4*		M10*80	Hex Bolts
14*		M10	Flange Nut	8*		M10*100*30	Hex Bolts
4*		M6	Flange Nut	2*		M10	Large washer
4*		M10*25	Hex Bolts	22*		M10	Flat Washers
6*		M10*35	Hex Bolts	4*		M6	Flat Washers
2*			Nut on stick	2*			Large washer

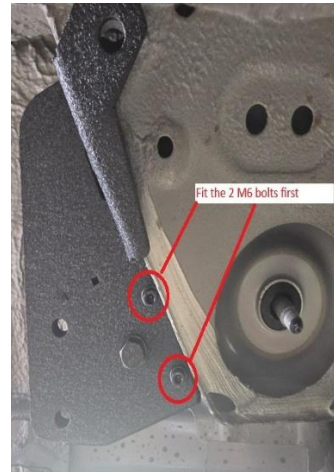
# Jimny XL JB74 5 DOOR ROCK SLIDERS FITTING INSTRUCTIONS



1. Carefully unwrap and inspect all components. Lay everything out on a soft surface.



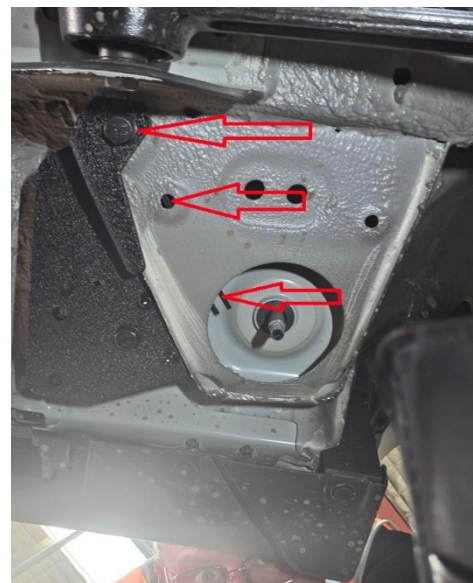
2. Locate both left and right front mounting brackets. Hold the front mounting bracket in position and fit 2x M6 bolts and nuts.



3. Fit the M10 x 35mm bolt and small M10 washer up through the bracket and fit the large M10 washer and M10 flange nut as shown below, do up finger tight only.



4. Fit the M10 mold nut into the chassis; you may need to remove the large body mount nut, washer, and rubber. Using an M10 x 25mm bolt and an M10 small washer, screw through the bracket and into the mold nut.



# Jimny XL JB74 5 DOOR ROCK SLIDERS FITTING INSTRUCTIONS



5. Once all of the bolts are fitted, tighten as required. Refit chassis mount rubber, washer, and nut.

6. Hold the slider in position and fit 4 M10 X 100mm bolts with M10 small washers into the center mount bracket and up through the chassis bracket, fit 4 x M10 flange nuts on top. Tighten up finger tight.



7. Using 2 M10 x 35mm bolts and M10 small washers, bolt the slider up to the front bracket. Tighten finger tight only.



8. Place the front half of the rear bracket in position between the slider mount and the round chassis mount. Fit an M10 bolt with an M10 small washer through the bracket and the slider, and screw on an M10 flange nut.



# Jimny XL JB74 5 DOOR ROCK SLIDERS

## FITTING INSTRUCTIONS



9. Place the rear half of the rear bracket in position and fit the 2 M10 x 80mm bolts with M10 small washers through from the rear into the captive nuts.

**Note:** It may be easier to remove the rear body mount nut and washer to fit this bracket.



10. Refit the body mount washer and nut. **Note:** We have found that on some vehicles, the rear mount may rest against the rear body mount washer. Cut or grind a small "flat" on the washer to allow 5 to 10mm clearance.



11. Tighten the rear bracket bolts first, then tighten the front bracket bolts, and finally tighten the center mount bolts. **Note:** don't over-tighten the center mount bolts. Repeat the same process for the other side slider.