

DASH
OFFROAD

**WHEEL
FLARES**



**INSTALLATION
INSTRUCTIONS**

WHEEL FLARES

INSTALLATION INSTRUCTIONS



PLEASE NOTE: These flares are raw plastic and will require painting or wrapping before installation.

1. Remove the front and rear factory mudflaps.
2. Remove the screw on the front of the rear wheel arch that holds the inner guard in place.
3. Retain these screws as some will be used later to assist in fixing the wheel flares.



REAR MUD FLAP



REAR WHEEL ARCH

4. Unpack the wheel flares and place each flare against the Patrol to determine which wheel flare goes where.
5. Clean the panels where the double sided tape on the back of the flares will be applied with an Isopropyl alcohol cleaner (Not supplied) or similar.



WHEEL ARCH

WHEEL FLARES

INSTALLATION INSTRUCTIONS



6. If you have a front or rear after market bar then you will need to trim the flares back to suit.



FRONT FLARE AGAINST BULL BAR

7. Once the flares are trimmed to size they will need to be painted or wrapped before applying to the vehicle.
8. Before applying the rubber edging leave it out in the sun to warm or use a heat gun or similar to make more pliable and easier to apply
9. As you apply the rubber edging you will need to trim the rubber edging where it sits against the tape on the flare, this allows a flatter finish and easier to apply.



UNDER SIDE OF FLARE

WHEEL FLARES

INSTALLATION INSTRUCTIONS



10. It is recommended to use Sikaflex (Not Supplied) as well as the double sided tape to attach the flares and ensure a permanent fix.

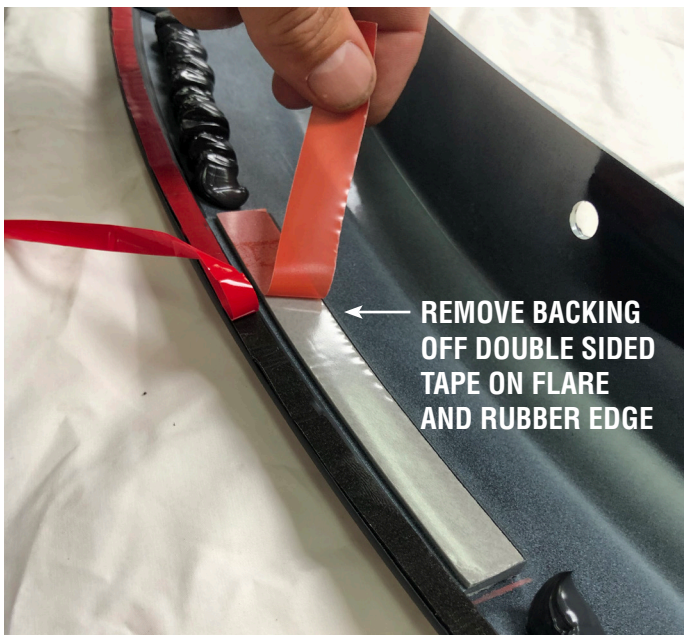
11. Apply the Sikaflex between the double sided tape ensuring that it is sitting higher than the tape so that it creates a good contact when pressed against the guard.



APPLY SIKAFLEX TO BACK OF FLARE IN BETWEEN DOUBLE SIDED TAPE

UNDER SIDE OF FLARE

12. Remove the backing from the double sided tape on the flare and the double sided tape on the rubber edging.



REMOVE BACKING OFF DOUBLE SIDED TAPE ON FLARE AND RUBBER EDGE

UNDER SIDE OF FLARE

13. Place the wheel flare into position on the guard and press firmly into place, use clamps or tape to hold the flare in place for 24 hrs while the Sikaflex dries.



CLAMP FLARE IN PLACE WHILE SIKAFLEX DRIES

FRONT FLARE

WHEEL FLARES

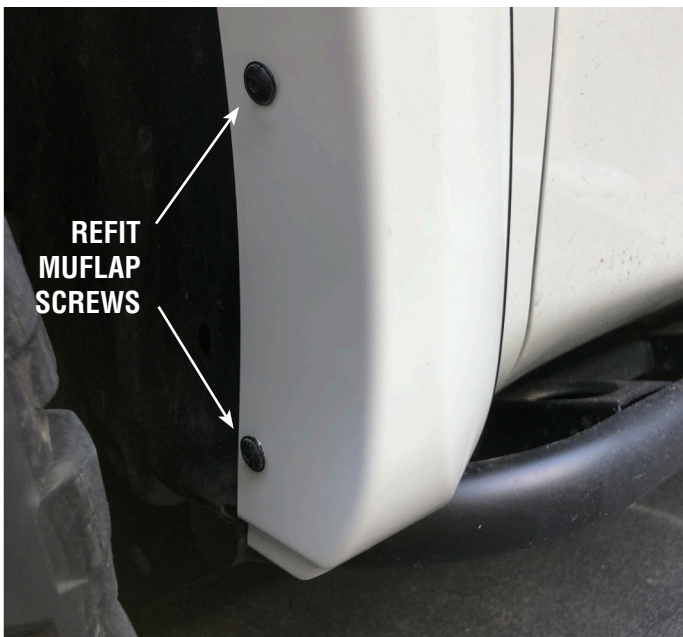
INSTALLATION INSTRUCTIONS



14. Refit the screws that were removed from the front mudflaps.

15. Refit the screw at the front of the rear wheel arch.

16. Also on the rear wheel flare there is a hole towards the top that aligns with a factory hole in the wheel arch, you can also fix a nut and bolt (Not Supplied) through the two for an additional fixing.



FRONT WHEEL FLARE



BACK WHEEL FLARE

17. Once the Sikaflex is dry (check drying times on Sikaflex tube) you can remove the tape.