

Fitting instructions for TJM bar on 2019 Nissan Patrol.

1. Remove bolts from bag, divide into 2 groups. Below are the bolts needed for one side.



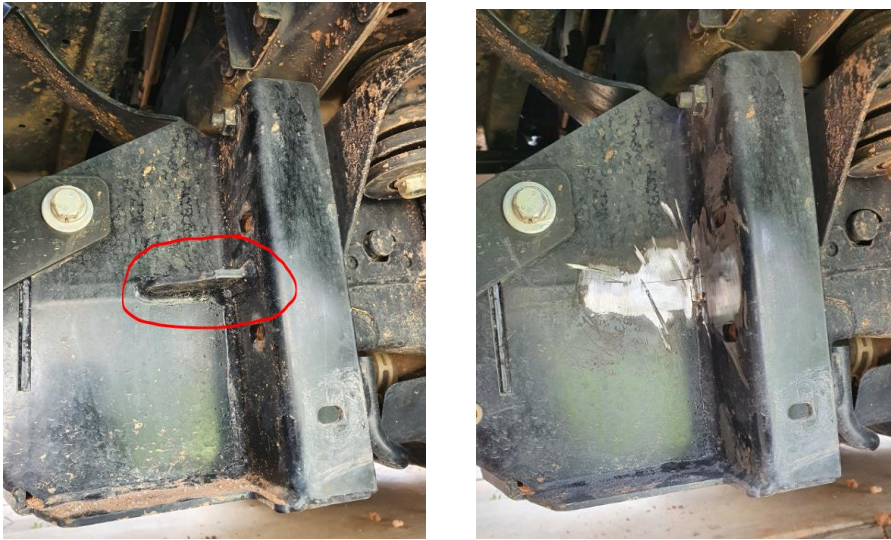
2. Remove front LH bash guard to inspect recovery point mounting location



3. Loosen the bottom 2 bolts, hit the bolts with a hammer to dislodge and remove.



4. Use an angle grinder to remove gusset



5. Drill out the 2 holes to 13mm.



6. Remove thread set from the bull bar.



7. Fit front and rear bracket and tighten bolts firmly, drill 11mm hole (circled below) through the bull bar.



8. Fit top bolt and tighten all bolts up.



9. Bash guards will require a slight trim to allow the recovery point to fit through.

10. Refit panel.



11. Repeat steps 1-10 on the RHS